



*Sowerby's*  
*Ellison Glassworks Ltd.*

GATESHEAD · ON · TYNE, ENGLAND.





**TYNESYDE GLASSWARE**



**"Tynesycle"  
Glassware**

**ILLUSTRATED LIST No. 31. JANUARY, 1936.**

**SOWERBY'S ELLISON GLASSWORKS LTD.**

**OFFICES AND SHOWROOMS.**

**GATESHEAD-ON-TYNE.** Works and Head Office.

Telephone : Gateshead No. 72130.  
Telegrams : Sowerby, Gateshead.

**LONDON :—Gardiner House, 10/14, Charterhouse Street, E.C.1.**  
Telephone : Holborn 0802.

**Representatives :—**

LONDON :—Mr. C. A. Woods.

SUBURBAN LONDON, EASTERN COUNTIES AND SOUTH COAST :—Mr. A. S. Torkington, 19, Winsor Drive, Reading.

MIDLANDS, YORKSHIRE, LANCASHIRE, SCOTLAND AND IRELAND :—Mr. F. E. Smethurst, 14, Branksome Avenue, Prestwich, Manchester. Telephone : Prestwich 2183.

NORTH EASTERN COUNTIES :—Mr. J. T. Birks (Works).

**Colonial and Foreign Representatives :—**

AUSTRALIA, SYDNEY, N.S.W. :—Danks Buildings, 324, Pitt Street (G.P.O. Box 471 F.F.).  
Reslaw, Green & Scott Pty. Ltd.

NEW ZEALAND, AUCKLAND :—Paykel's Buildings, Anzac Avenue (P.O. Box 604.). H. E. Cooper & Co.

SOUTH AFRICA, JOHANNESBURG :—33/35, Belfast Buildings, 108, Market Street. (P.O. Box 3081.)  
A. C. McIntosh.

INDIA, BOMBAY :—Stronach House, Ballard Estate. (P.O. Box 375.) A. W. Brooke (Eastern) Ltd.

CANADA, TORONTO :—88, Herrick Street, W. Davidson & Co.

CANADA, VANCOUVER :—321, Water Street, Jas. M. Brown & Co. Ltd.

JAMAICA, KINGSTON :—8, Church Street. (P.O. BOX 84.) L. Keble Davidson.

BUENOS AIRES :—Cangallo 910, P. W. Howard & Co.



**SOWERBY'S ELLISON GLASSWORKS LTD.**







**TYNESYDE GLASSWARE**



**THE "BUTTERFLY" 7-PIECE TRINKET SET.**

A CHARMING SET MADE IN PASTEL SHADES OF  
AMBER, GREEN AND BLUE. ACID FINISH.



**SOWERBY'S ELLISON GLASSWORKS LTD.**







TYNESYDE GLASSWARE



**“FLORA” 12" Bowl & Figure & Vase & Holder.**

MADE IN PASTEL SHADES OF AMBER, GREEN, BLUE  
AND ROSALIN. ACID FINISH. Registration No. 808160.



SOWERBY'S ELLISON GLASSWORKS LTD.



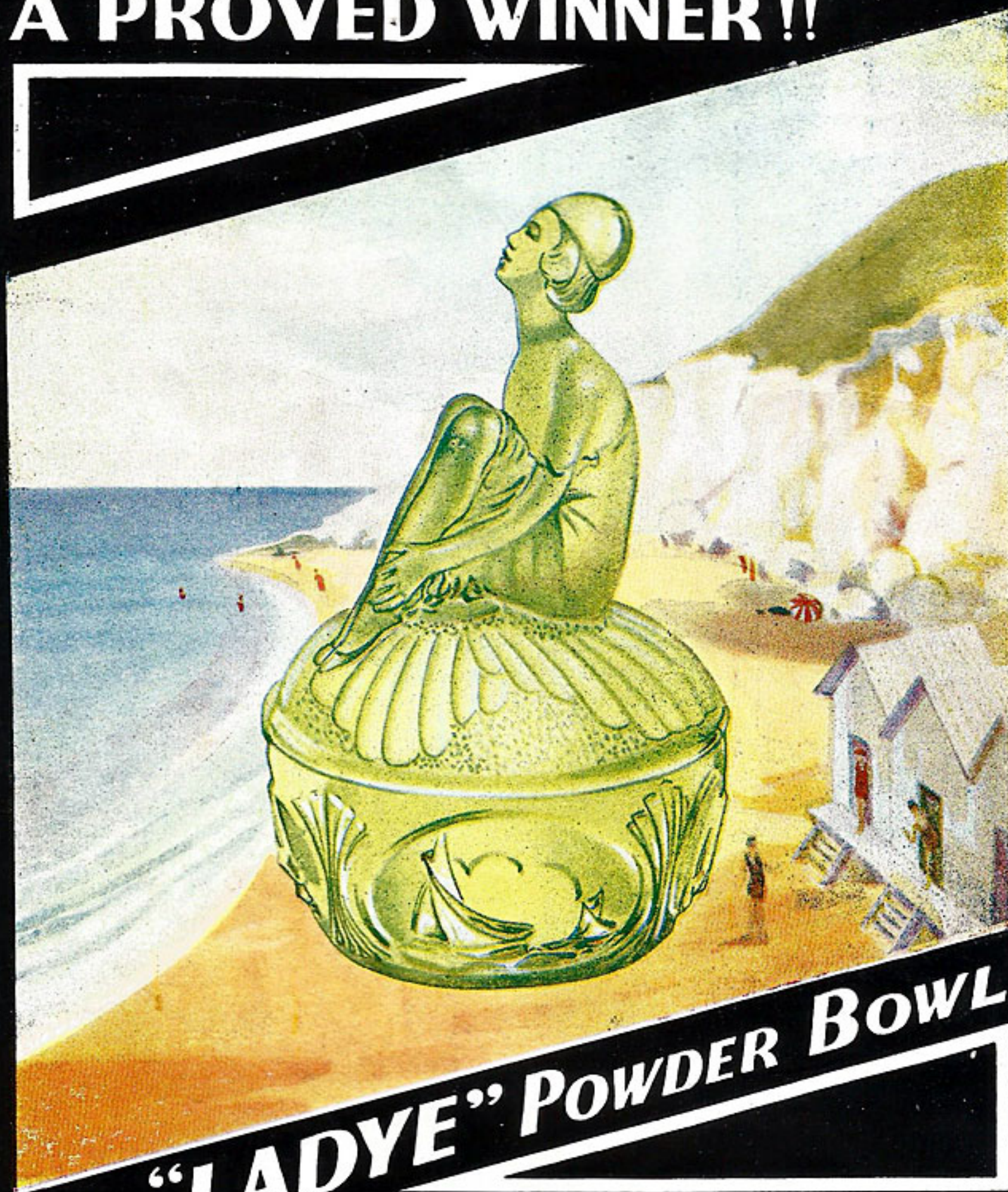




TYNESYDE GLASSWARE



**A PROVED WINNER!!**



**"LADYE" POWDER BOWL**  
**EXQUISITELY MODELLED**

MADE IN PASTEL SHADES OF AMBER, GREEN, BLUE  
and ROSALIN. ACID FINISH.



SOWERBY'S ELLISON GLASSWORKS LTD.







## THE SALES RECORD BREAKERS!!!

INCREASE YOUR  
SALES WITH  
THESE QUICK-  
SELLING LINES.

MADE IN FLINT  
AND PASTEL  
SHADES OF  
ROSALIN,  
AMBER,  
GREEN  
AND  
BLUE.



**2505  
SALAD, FLANGED,  
AND PLINTH.**

**2505  
CENTRE PIECE,  
BLOCK AND PLINTH,**

**"LILY VASE."**

Fitted with Holder and Plinth.

Sizes 6" and 8".

Also as "Poesy" Set. Size 4"

**"IRIS" VASE.**

Fitted with Holder and Plinth.

Sizes 6" and 8".

Also as "Poesy" Set. Size 3"







## TYNESYDE GLASSWARE



### THE NEW SUITE FOR 1936.

A MODERN RAY PATTERN, MADE IN FLINT,  
ROSALIN, GREEN, AMBER AND BLUE.



"TULIP" VASE AND HOLDER.  
7" high. Also fitted with Plinth.



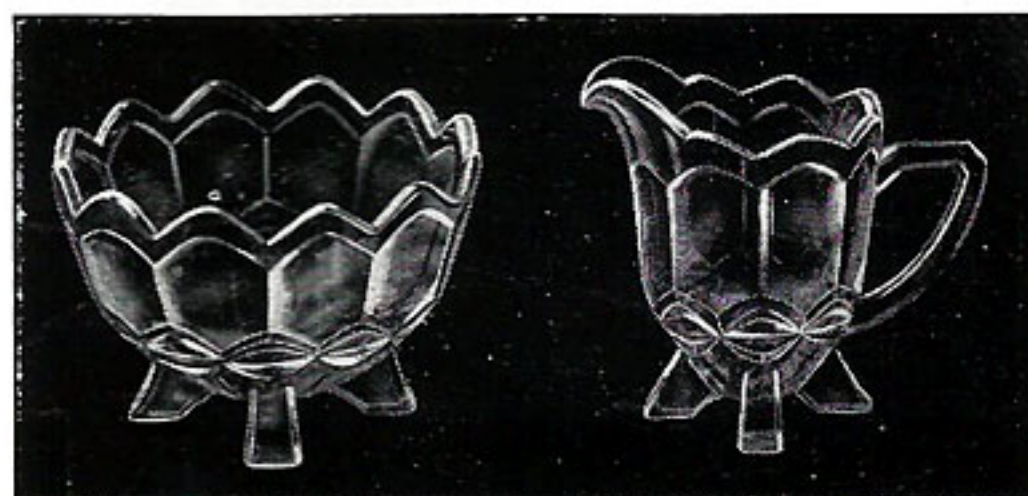
"BEVERLEY" POESY VASE  
3½" high. Made in Flint, Amber,  
Blue, Green and Rosalin.  
Also Satinette finish.  
Can be supplied with Holder.



"CROCUS" VASE AND HOLDER.  
5½" high. Also fitted with Plinth.



HONEY.  
5½" high.  
With and without Spoonhole.



SUGAR.  
5" dia.

CREAM.  
4" high.



SOWERBY'S ELLISON GLASSWORKS LTD.



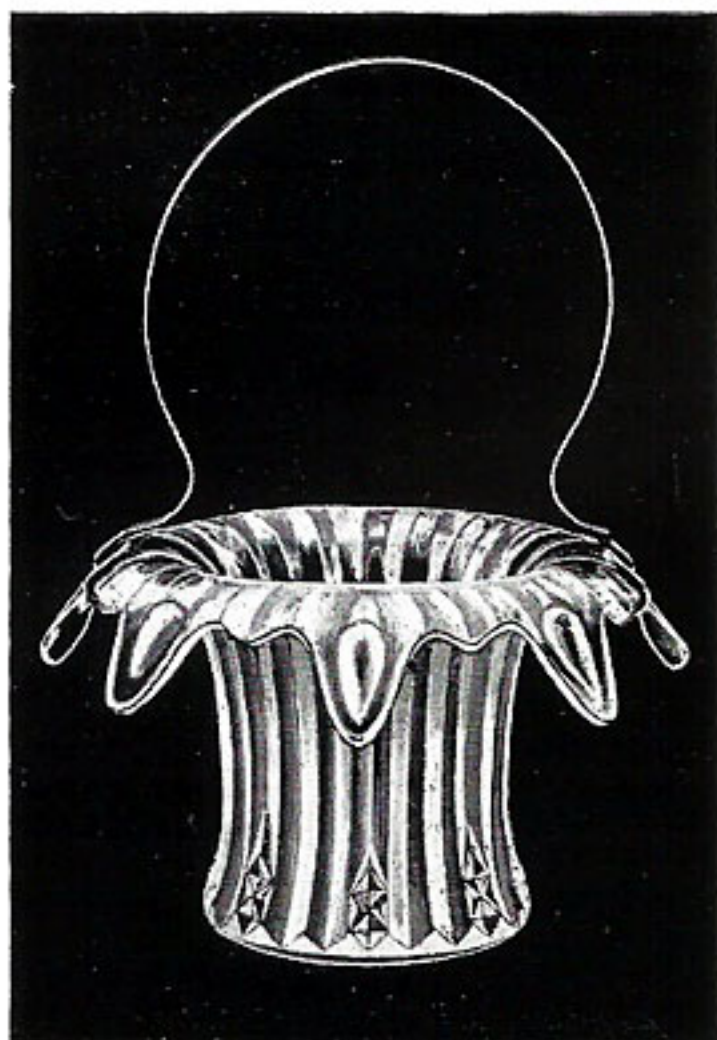




## TYNESYDE GLASSWARE



SMART NEW LINES FOR 1936.



"IRIS" FLOWER BASKET.

Chromium-plated Handle.

Made in Flint, Amber, Blue, Green and Rosalin.



"HERMES" ROSE BOWL AND HOLDER.

On four feet. Dia. 7".

Also made as Fruit Bowl without Holder.

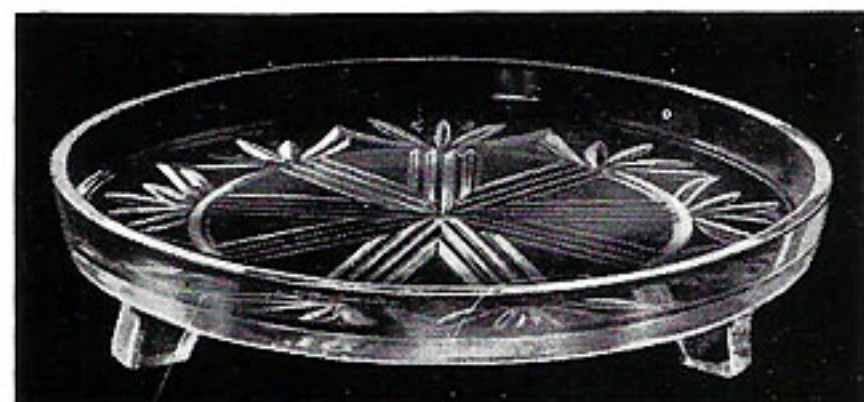
Made in Amber, Blue, Green and Rosalin. Acid finish.



2561 BOWL.

Flanged and Square.

Made in 4 sizes {  $5\frac{1}{2}"$ ,  $6\frac{1}{2}"$ ,  
 $7\frac{1}{2}"$  and  $8\frac{1}{2}"$ .



2563 CAKE PLATE.

On three feet. Dia. 8".

Made in Flint, Amber, Green, Blue and Rosalin.



SOWERBY'S ELLISON GLASSWORKS LTD.







## TYNESYDE GLASSWARE



### "FROG"

VASE, HOLDER & PLINTH.  
HEIGHT 7½"

Made in Green, Amber, Rosalin  
and Blue.

Also made low shape as Rose Bowl.  
Acid finish. Regd. No. 787048.



### "FROG"

CENTRE PIECE,  
BLOCK & PLINTH

Dia. of Bowl, 9½"

Made in Flint,  
Green, Amber,  
Rosalin and Blue.

Acid finish.

Regd. No. 796446.



### "DAISY" VASE AND HOLDER.

Made in Flint, Rosalin, Green, Amber  
and Blue. Acid finish. HEIGHT 7½"

Regd. No. 799041.



### "FROG" BASKET. Dia. 9½"

Chromium-plated Handle. Made in  
Flint, Rosalin, Amber, Green and Blue.  
Acid finish.



### "ENID"

POWDER BOWL. Dia 4".

Made in Rosalin, Amber,  
Green and Blue. Acid finish.



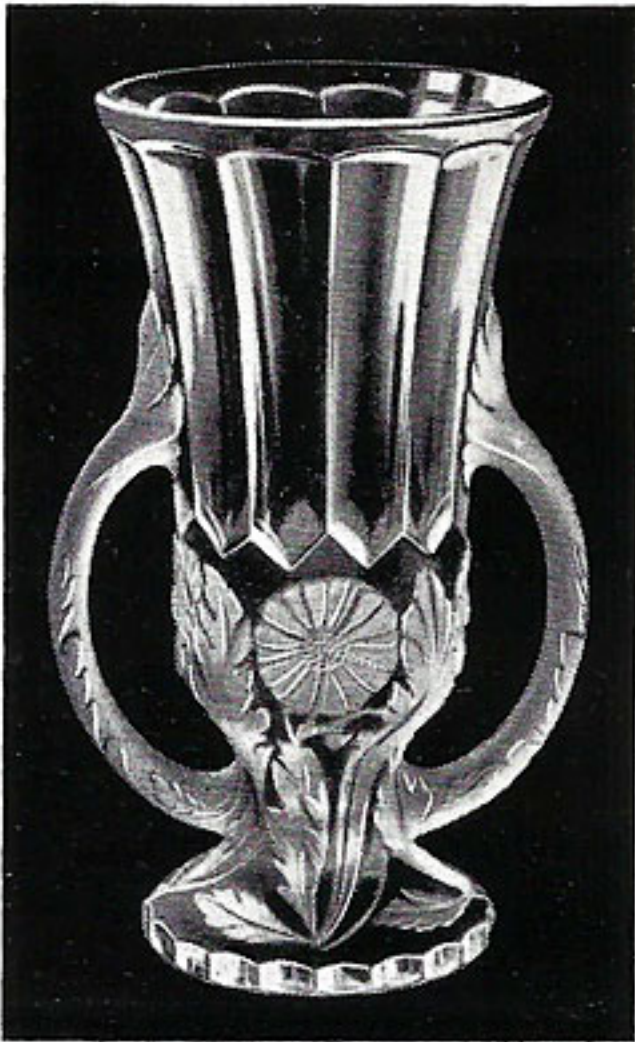
SOWERBY'S ELLISON GLASSWORKS LTD.







# TYNESYDE GLASSWARE



"DORA" VASE.

9½" high.

Made in Flint, Rosalin, Amber, Green and Blue. Acid finish.

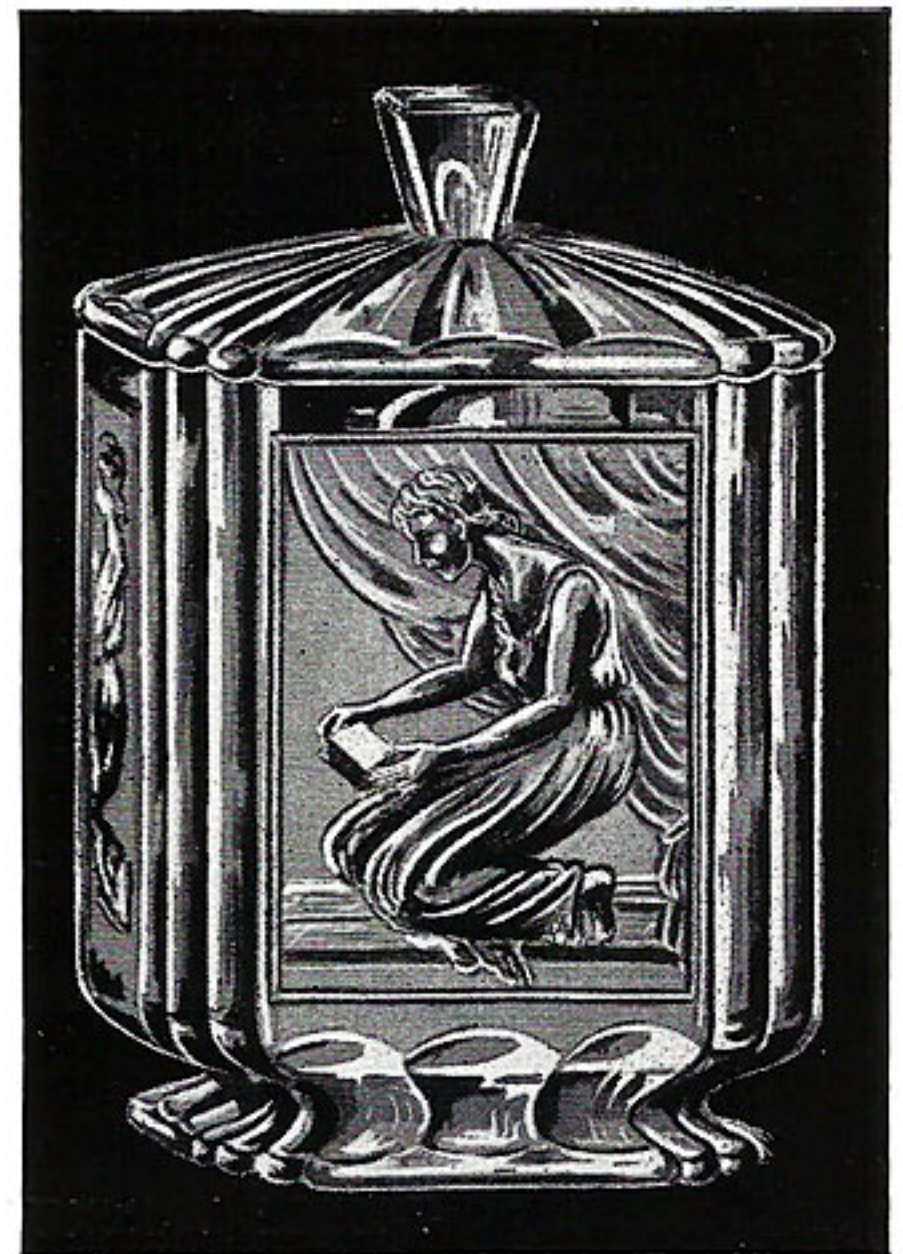


"SUNRAY" VASE, HOLDER AND PLINTH.

Made in Flint, Rosalin, Amber, Green and Blue, also Satinette finish.

9" high.

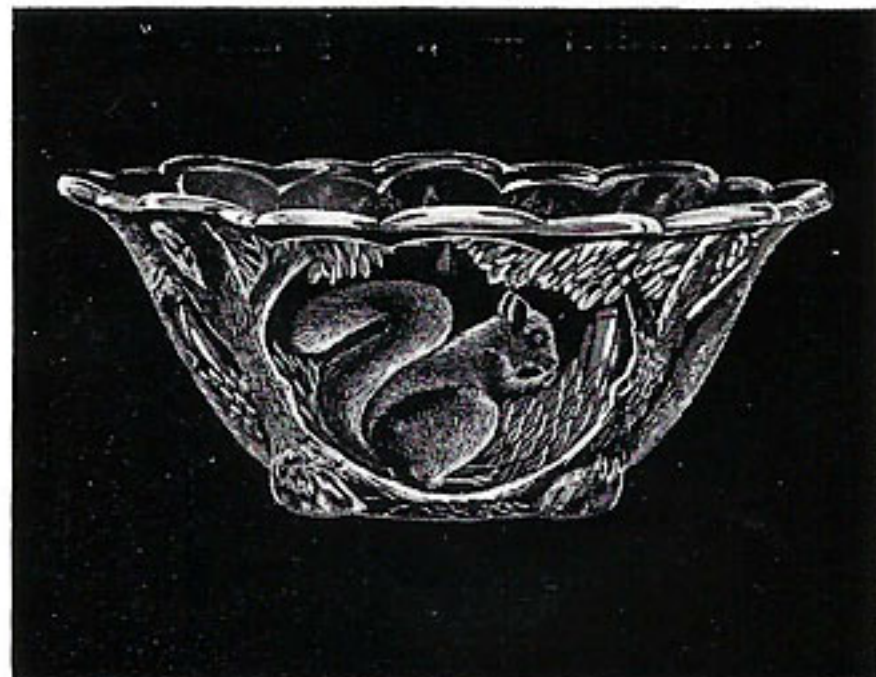
Regd. No. 790213.



"PANDORA" BISCUIT.

Made in Rosalin, Amber, Green and Blue.

Acid finish. 7½" high.



"SQUIRREL" NUT BOWL.

Round and Square.

Made in Flint, Rosalin, Amber, Green and Blue.

Dia. 9½"

Also Acid finish.



"SQUIRREL" BOWL (Flanged) AND FIGURE.

Made in Rosalin, Amber, Green and Blue.

10" dia.

Acid finish.



SOWERBY'S ELLISON GLASSWORKS LTD.







## BERKLEY SUITE



7-PIECE TRINKET SET.



SUGAR 5½" dia.



SALAD BOWL.  
INCURVED — Sizes 6½" and 7½"  
STRAIGHT — „ 7½" and 8½"



7" VASE AND PLINTH.  
Incurved and Straight.



8" FRUIT BOWL AND PLINTH.  
Straight and Incurved.



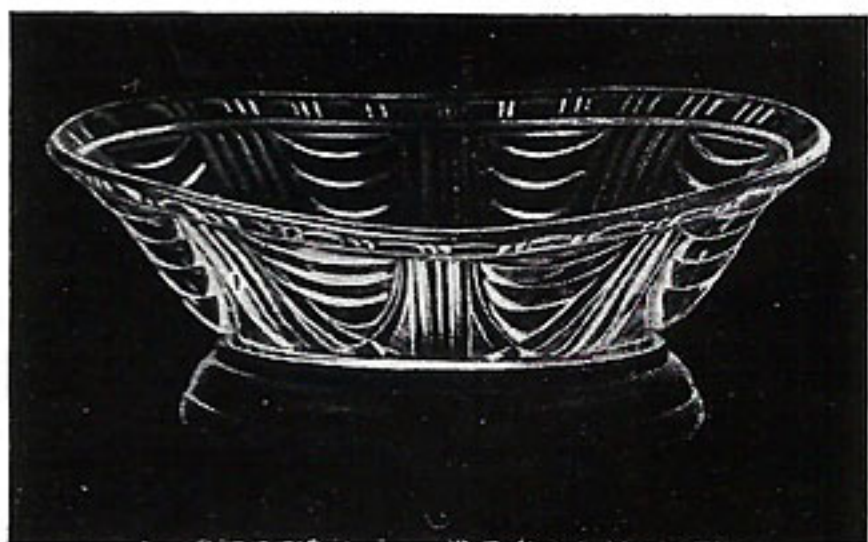
SOWERBY'S ELLISON GLASSWORKS LTD.







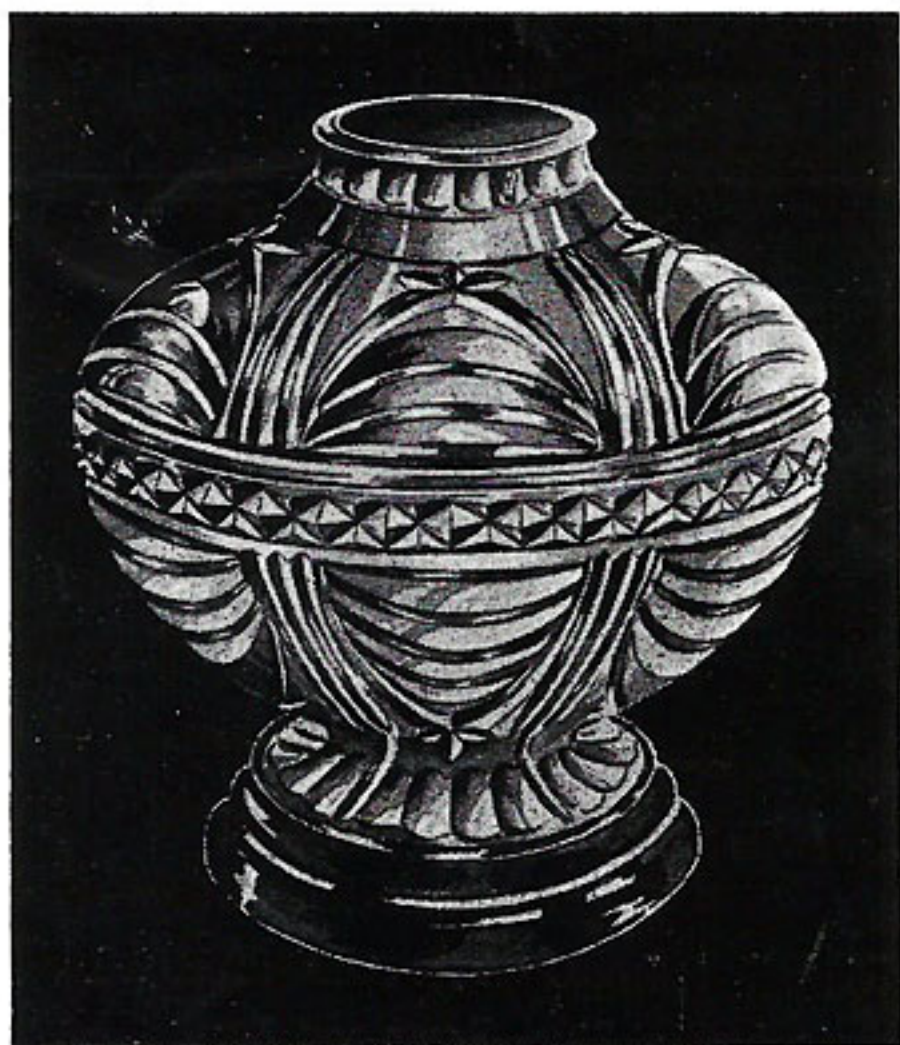
## BERKLEY SUITE



12" FLANGED BOAT AND PLINTH.



9" INCURVED BOAT.



7" FLOWER CENTRE PIECE,  
HOLDER AND PLINTH.



WATER SET.

One 1½-pint Jug, and six ½-pint Tumblers.  
Made in Flint, Green, Amber, Blue and Rosalin.



9" VASE, HOLDER  
AND PLINTH.

Pat. No. 422035/34.



SOWERBY'S ELLISON GLASSWORKS LTD.



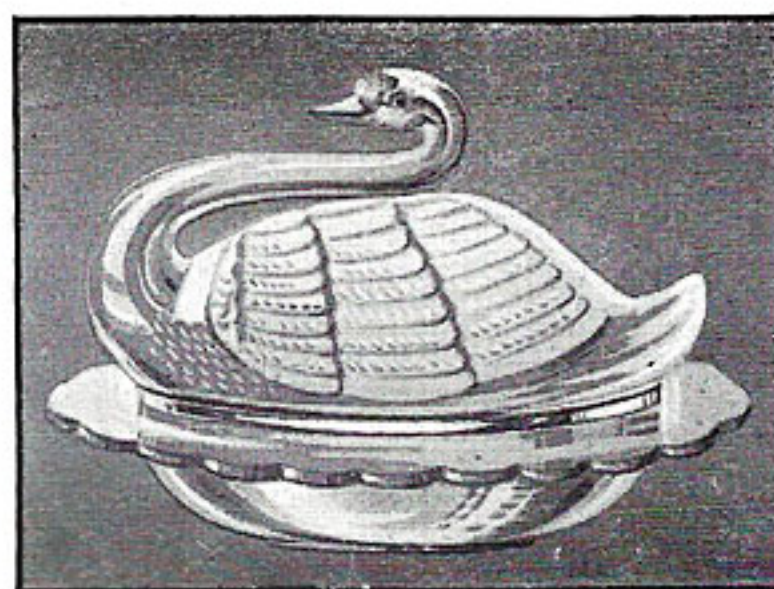




## TYNESYDE GLASSWARE



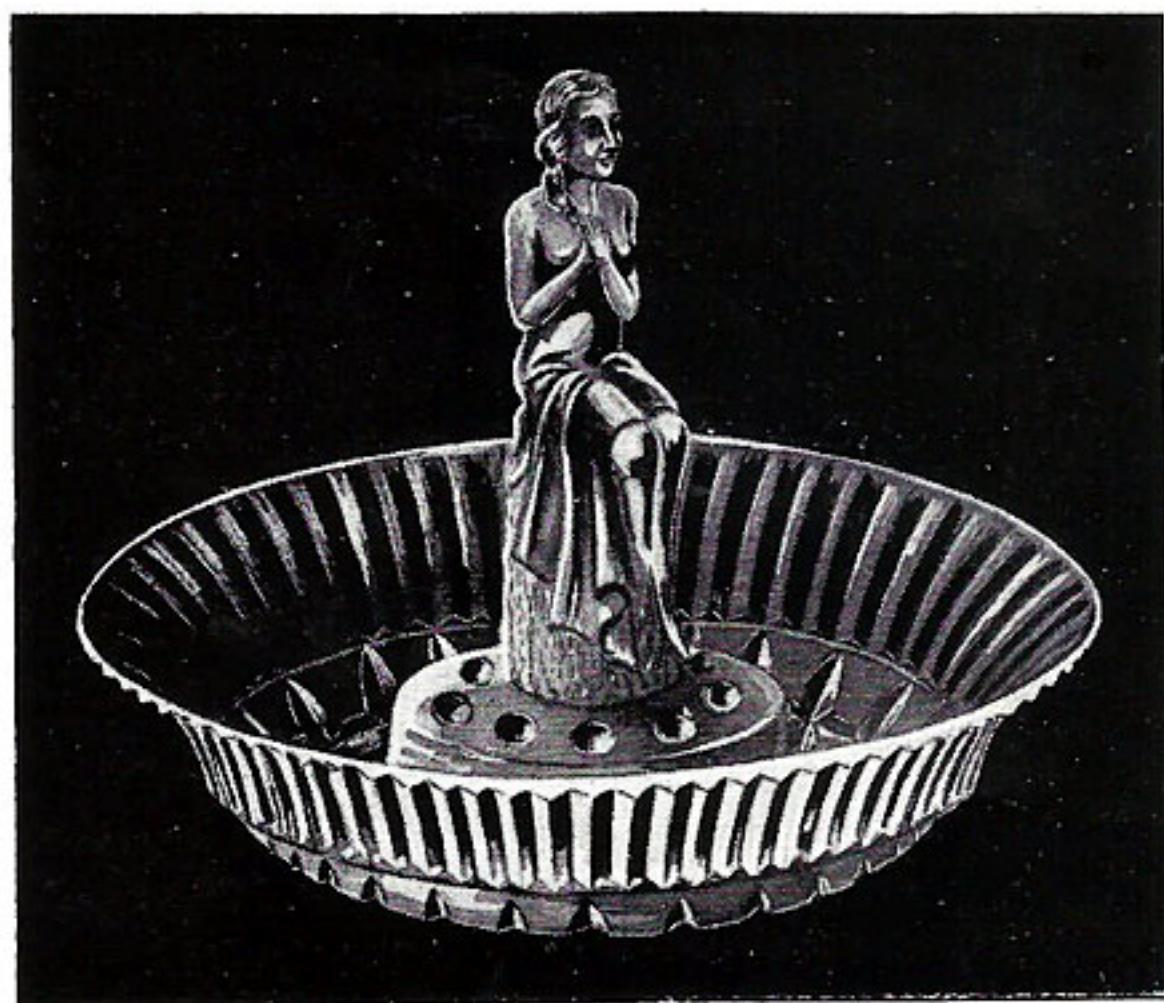
2555 VASE.  
Sizes 8", 10" and 12".



"SWAN" BUTTER.  
7½". Made in Amber, Blue, Green,  
and Rosalin. Acid finish.



"CHIC" BUTTER.  
7½". Made in Amber, Blue, Green  
and Rosalin. Acid finish.



2549 BOWL AND FIGURE.  
8½" dia. Made in Amber, Blue, Green and Rosalin.  
Satinette finish.



"FLORA" 10" BOWL AND FIGURE.  
Made in Amber, Blue, Green and Rosalin.  
Acid finish.



SOWERBY'S ELLISON GLASSWORKS LTD.



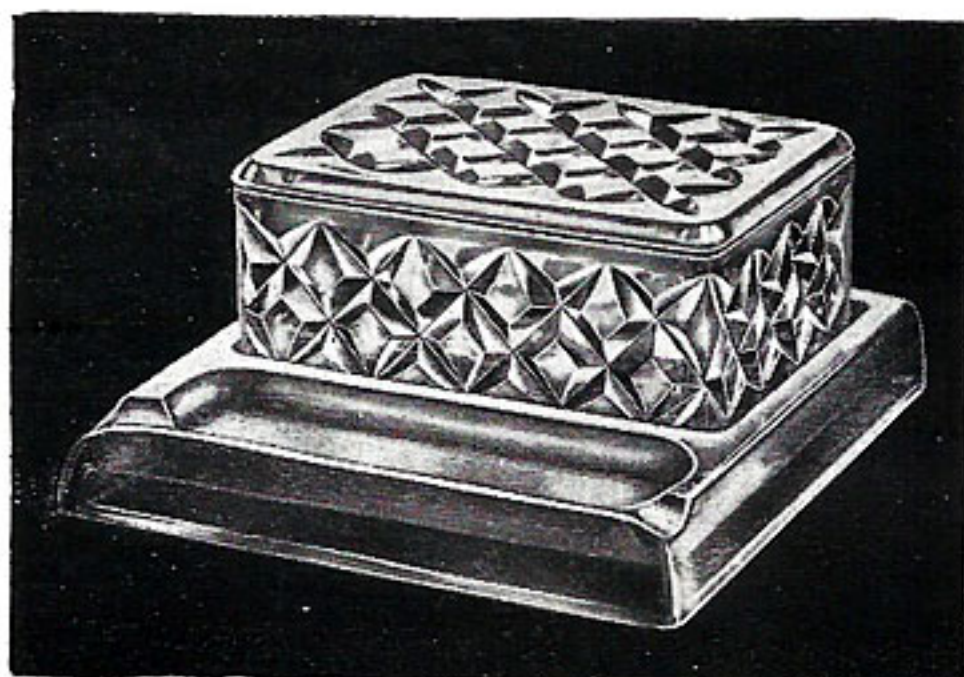




## MANCHESTER - SUITE



SUGAR AND CREAM (Large).  
5" dia. 4" high.



CIGARETTE BOX. Flint, Amber and Black.  
" TRAY. Amber and Black.



BISCUIT.  
7" high.



SALAD BOWL.  
Incurved, 8" ; Straight, 8½".



BOAT.  
Large : Incurved, 10" ; Flanged, 11" ; Straight, 10½".  
Small : Incurved, 8" ; Flanged, 9" ; Straight, 8½".



HANDLED SUGAR AND CREAM.  
4½" dia. 3½" high.



SOWERBY'S ELLISON GLASSWORKS LTD.







# MANCHESTER SUITE



ROSE BOWL AND HOLDER.  
6" high. Also fitted with Plinth.



FLOWER TUBE.  
Sizes 6", 8" and 10".



6 1/2" VASE AND HOLDER.  
Also fitted with Plinth.



"PETAL" VASE, HOLDER & PLINTH.



8" VASE AND HOLDER.  
Also fitted with Plinth.



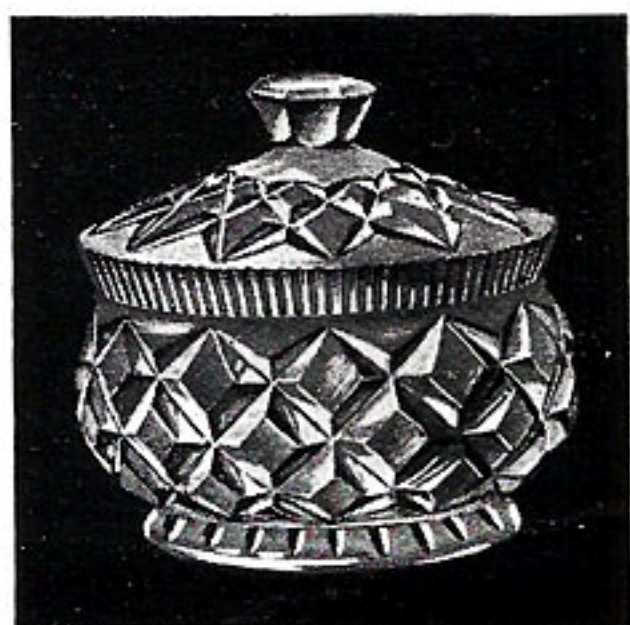
SOWERBY'S ELLISON GLASSWORKS LTD.







## MANCHESTER SUITE



PUFF AND COVER.  
5" dia.



TABLE LAMP.

Complete with 3 yds. of Flex. 14" high.  
Made in Flint, Amber, Blue, Green  
and Rosalin. Also with Acid finish.



HONEY.  
5" high.



SALAD AND PLINTH.  
8" dia.



FRUIT BOWL.  
On four feet. Round and Octagonal. 9" dia.



SOWERBY'S ELLISON GLASSWORKS LTD.





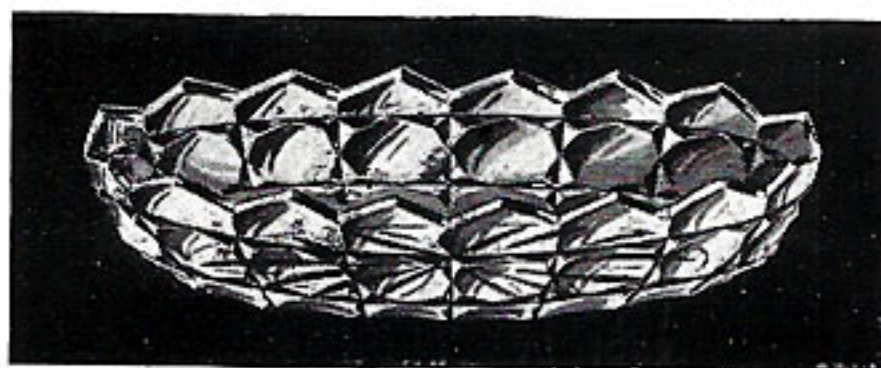


## OXFORD SUITE

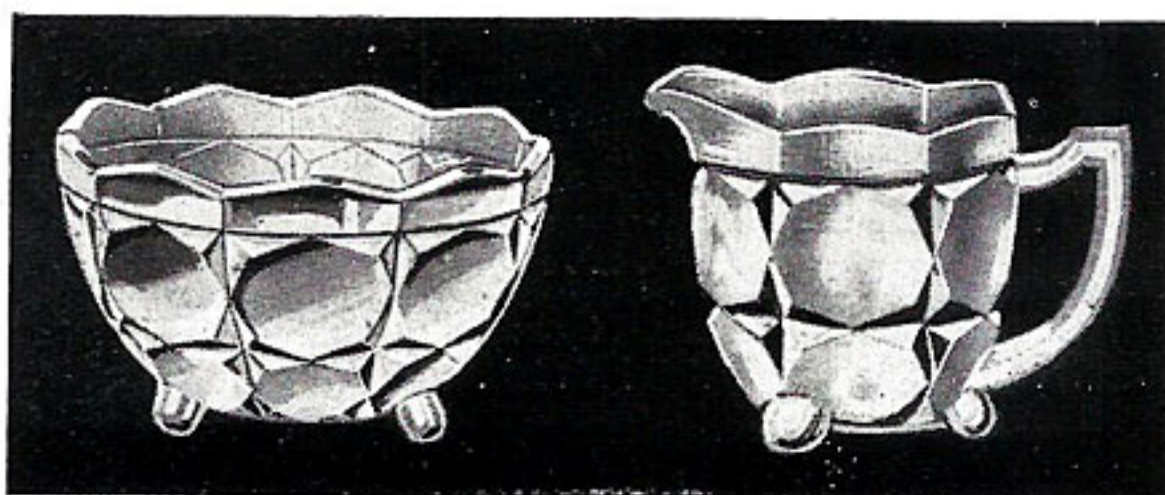


### WATER SET.

One 1½-pint Jug and six ½-pint Tumblers.  
Made in Flint, Blue, Amber,  
Green and Rosalin.

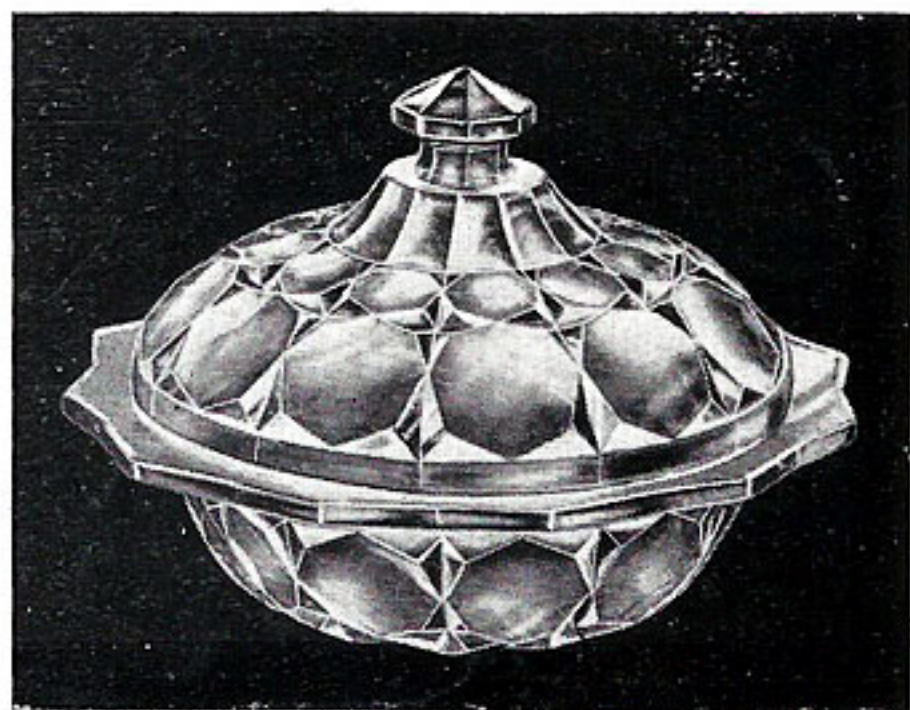


BANANA SPLIT. 7½" long.



SUGAR. 4¾" dia.  
Flanged and Straight.

CREAM. 3½" high.



BUTTER. 6½" dia.



CREAM BOWL. 3½" high.



SOWERBY'S ELLISON GLASSWORKS LTD.



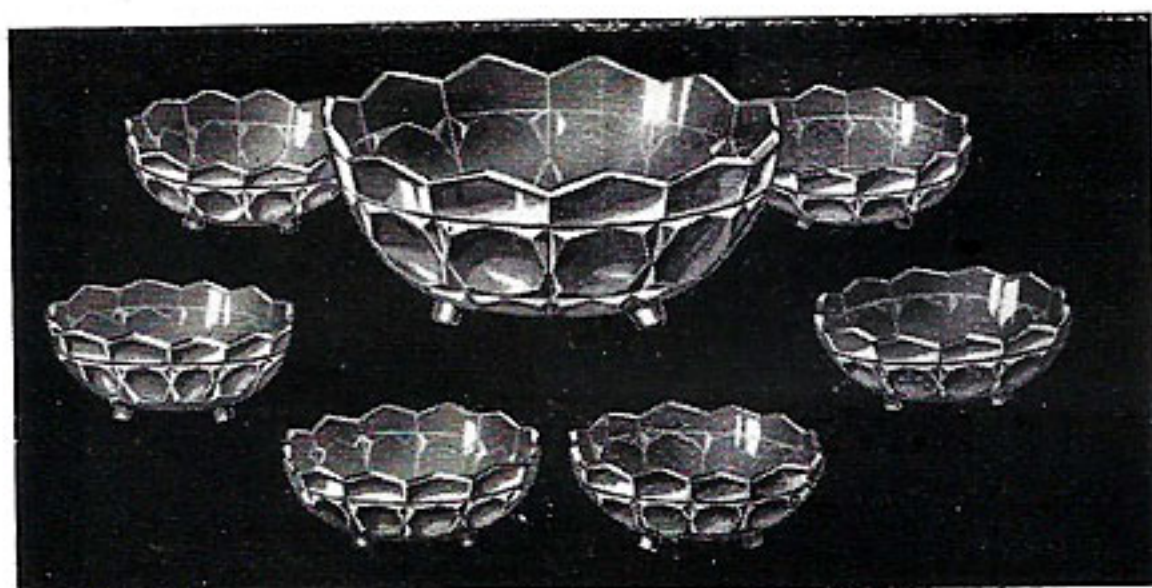




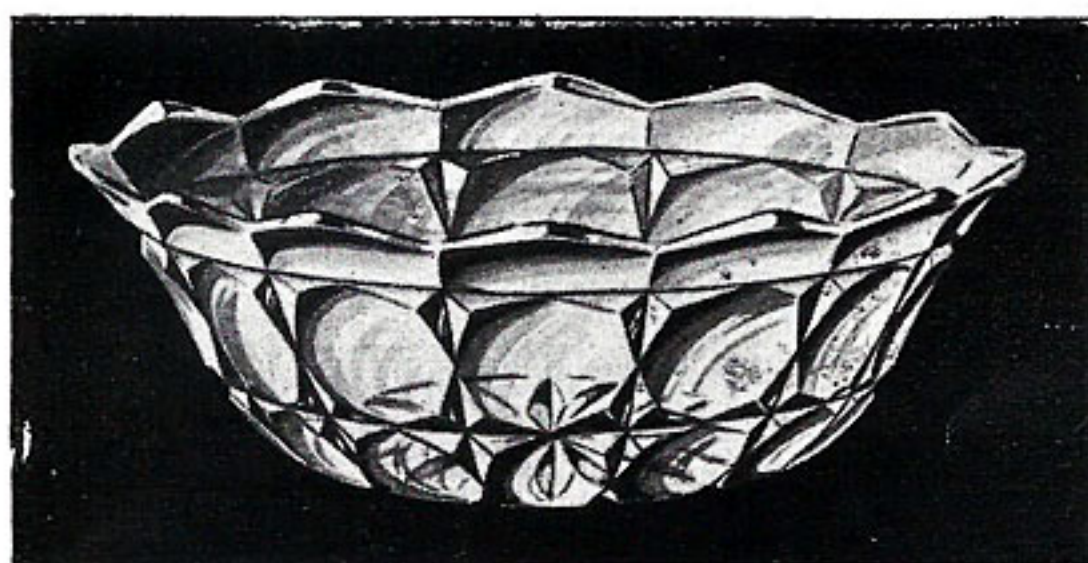
## OXFORD SUITE



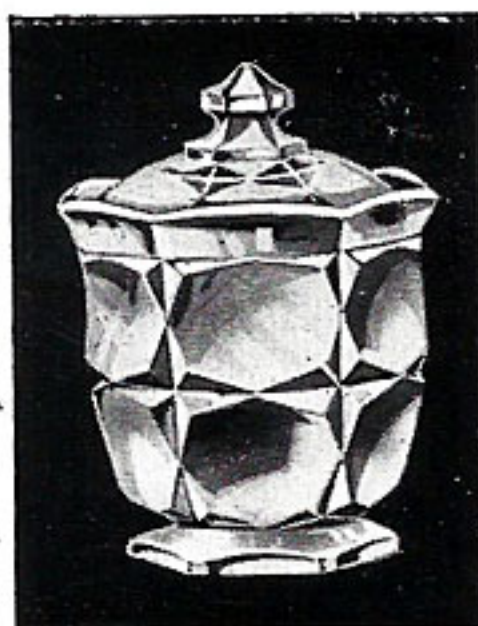
COMPORT.  
9½" dia.



FRUIT SET.  
On three feet.  
One 8" Salad and Six 4½" Dishes.



BOWL. Sizes 6½" to 9½" Flanged, 6" to 9" Straight.



HONEY. 5" dia.



CELERY. 6" high.



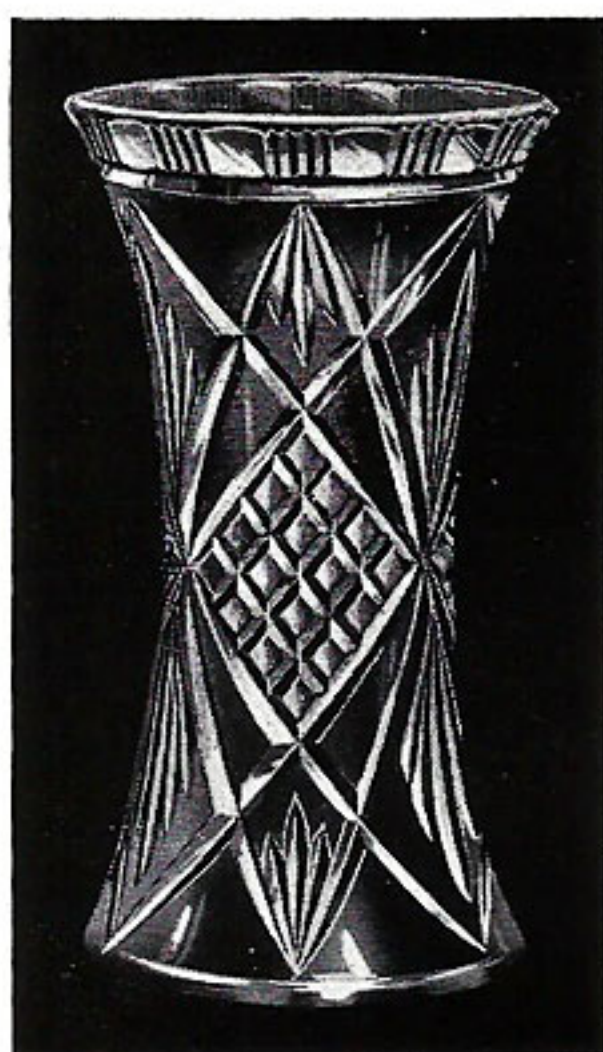
SOWERBY'S ELLISON GLASSWORKS LTD.







## DURHAM SUITE



FLOWER VASE.  
Sizes 5", 6", 8" and 10".



8" VASE AND HOLDER.

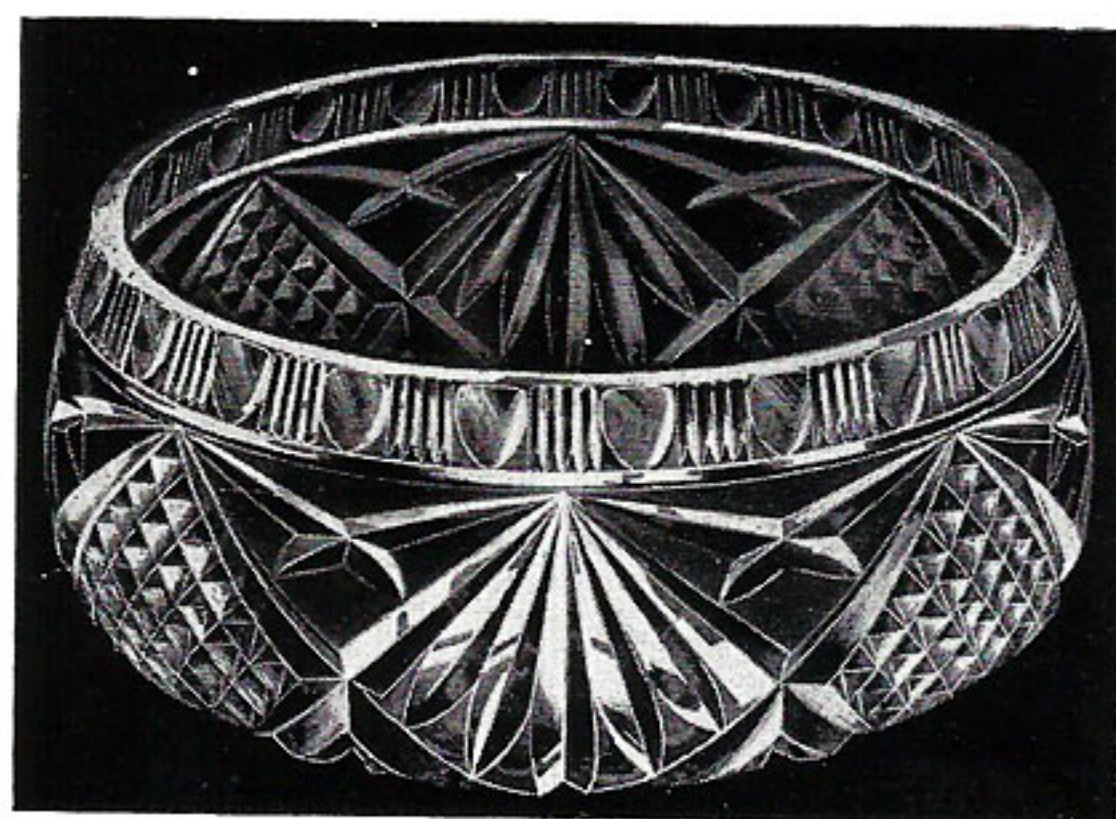


SUGAR.  
4" dia.

CREAM.  
3" high.



HONEY.  
4½" high.



SALAD BOWL.  
Incurved, 6½" and 7½".    Straight, 7½" and 8½".







## DURHAM SUITE



WATER SET.

One 1½-pint Jug and six ½-pint Tumblers.

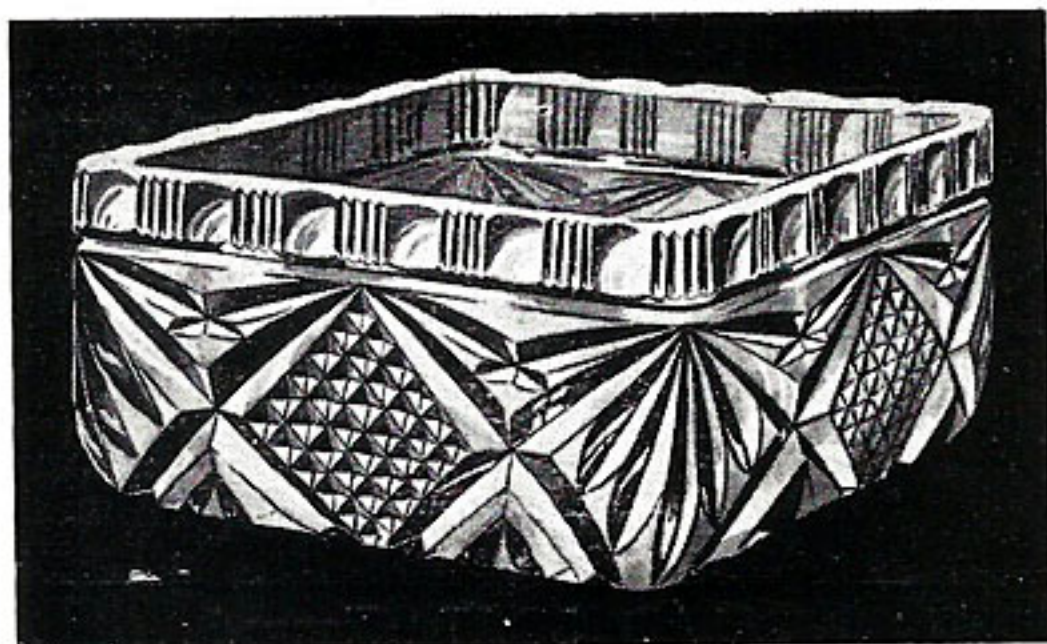


BISCUIT.

6½" high.



6½" BOAT.



8" SQUARE SALAD BOWL.



SOWERBY'S ELLISON GLASSWORKS LTD.



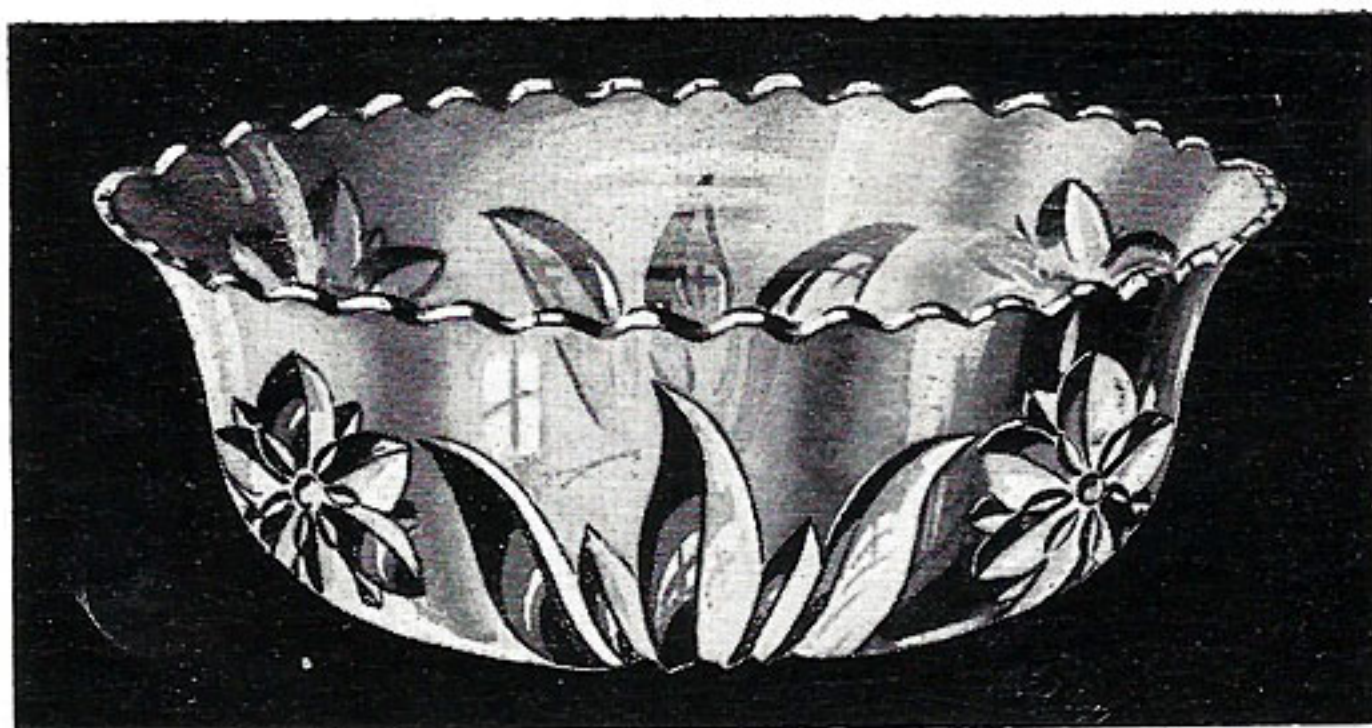




## WORCESTER SUITE



HONEY.  
4 $\frac{3}{4}$ " high.



DISH (Round).  
Sizes 4", 5", 6", 7" and 8" Straight.  
5 $\frac{1}{2}$ ", 6 $\frac{1}{2}$ ", 7 $\frac{1}{2}$ ", 8 $\frac{1}{2}$ " and 9 $\frac{1}{2}$ " Flanged, Deep.  
Oval, 6 $\frac{1}{2}$ ", 7 $\frac{1}{2}$ ", 8 $\frac{1}{2}$ " and 9 $\frac{1}{2}$ ".



SUGAR.  
5" dia.



CREAM.  
4" high.



BUTTER.  
6 $\frac{1}{4}$ " dia.



SALAD BOAT (Flanged).  
10". Incurved, 9".



SOWERBY'S ELLISON GLASSWORKS LTD.







## WORCESTER SUITE



WATER SET.  
One 1½-pint Jug and six ½-pint Tumblers.



VASE 10"



6" ROSE BOWL  
AND HOLDER.



7½" VASE AND HOLDER.



ROSE BOWL,  
BLOCK AND FLINTH.  
5" dia. Made in Flint, Amber,  
Blue, Green and Rosalin.



SALAD AND STAND.  
Round and Square. Height 10".



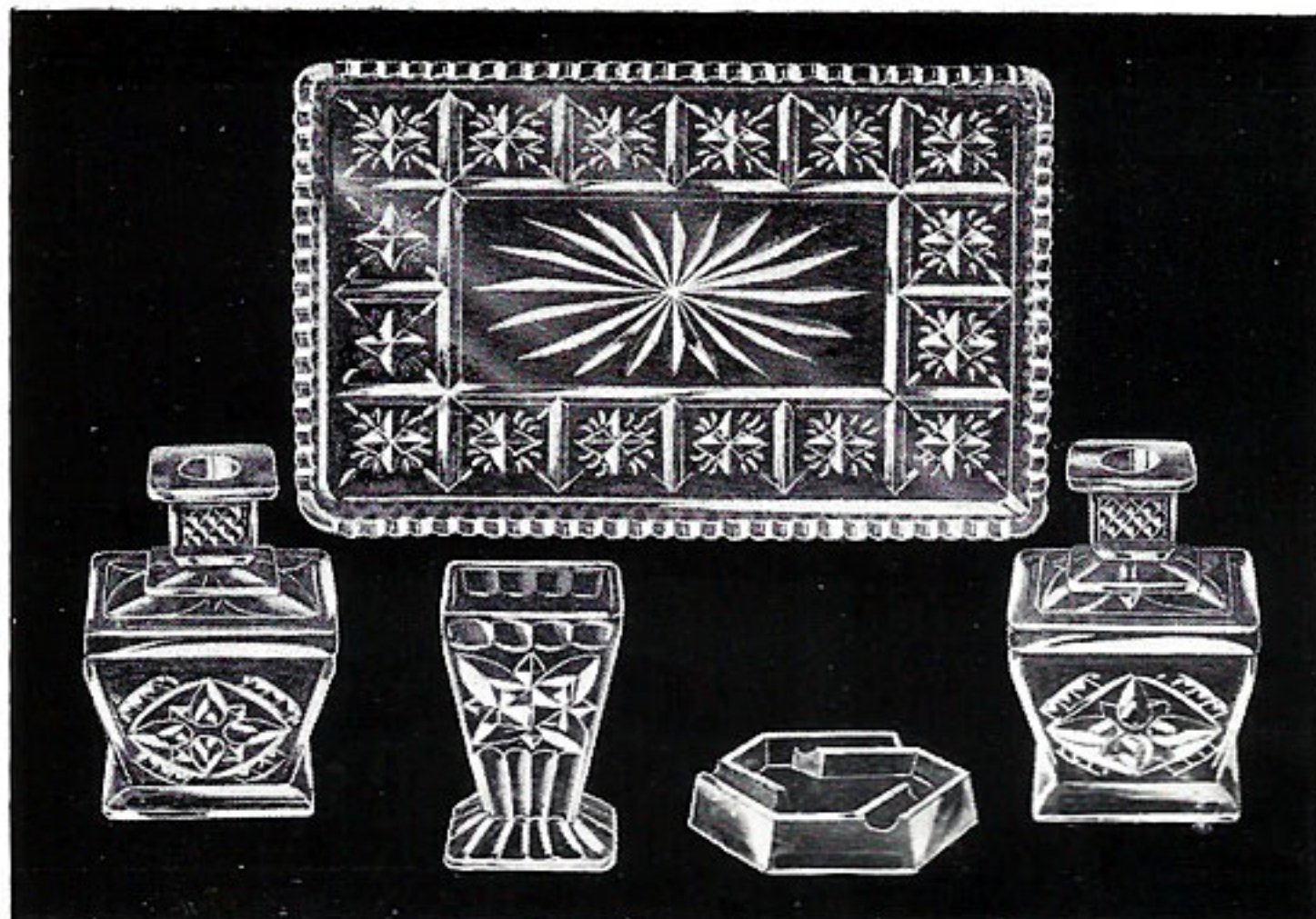
SOWERBY'S ELLISON GLASSWORKS LTD.







## TRINKET SETS



### " BEVERLEY."

5 PIECES.

Made in Flint, Amber, Blue  
and Green.

Regd. No. 807989.



### " BUTE." 7 PIECES.

Made in Flint only.

And also " TOBY " with  
" CADET " Tray (7 Pieces).

" PLAZA " (5 Pieces).

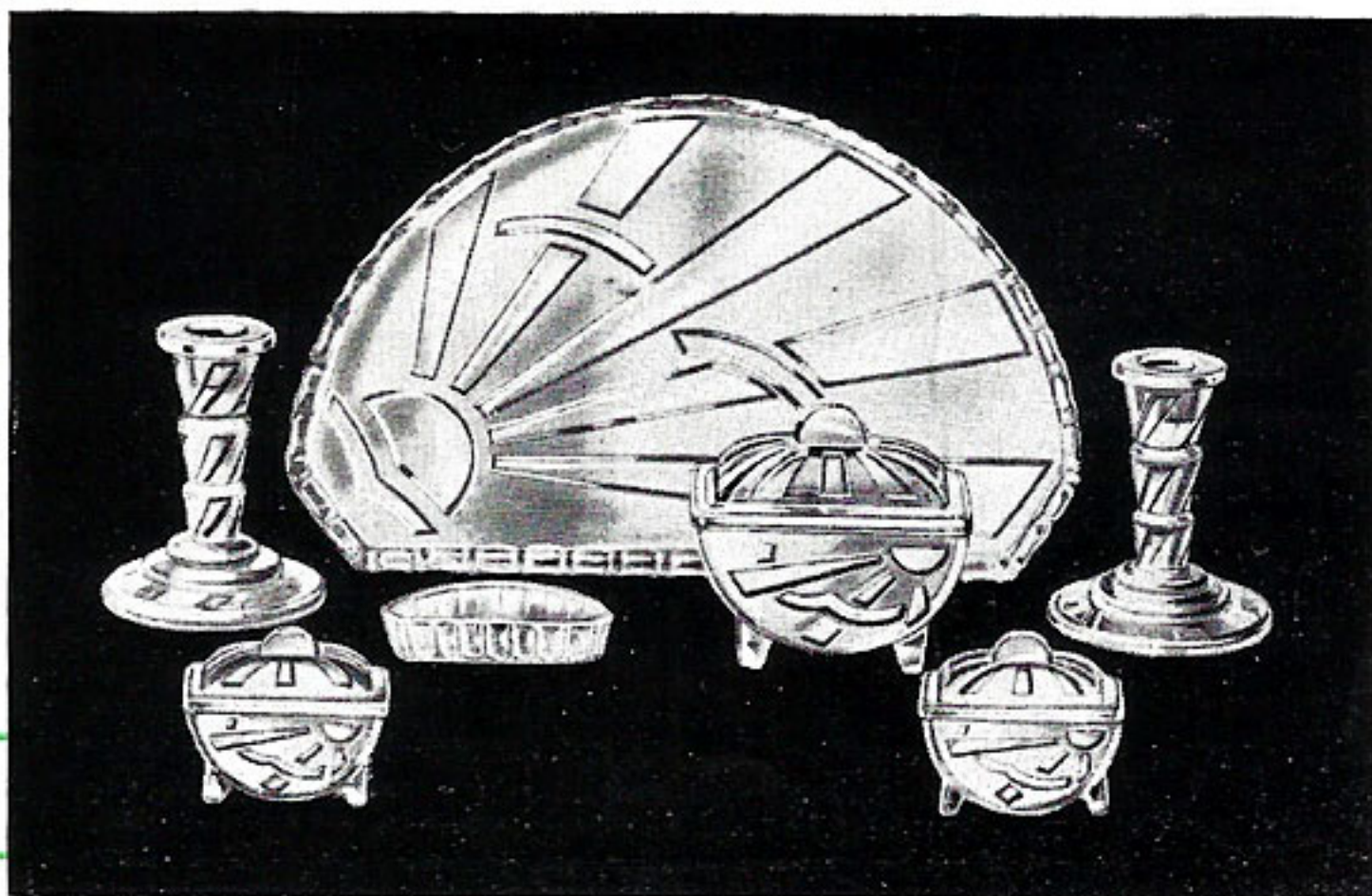
Made in Flint, Amber  
and Green.

### " SUNRAY."

7 PIECES.

Made in Flint, Amber, Blue  
and Green.

Regd. No. 788735.







## TRINKET SETS

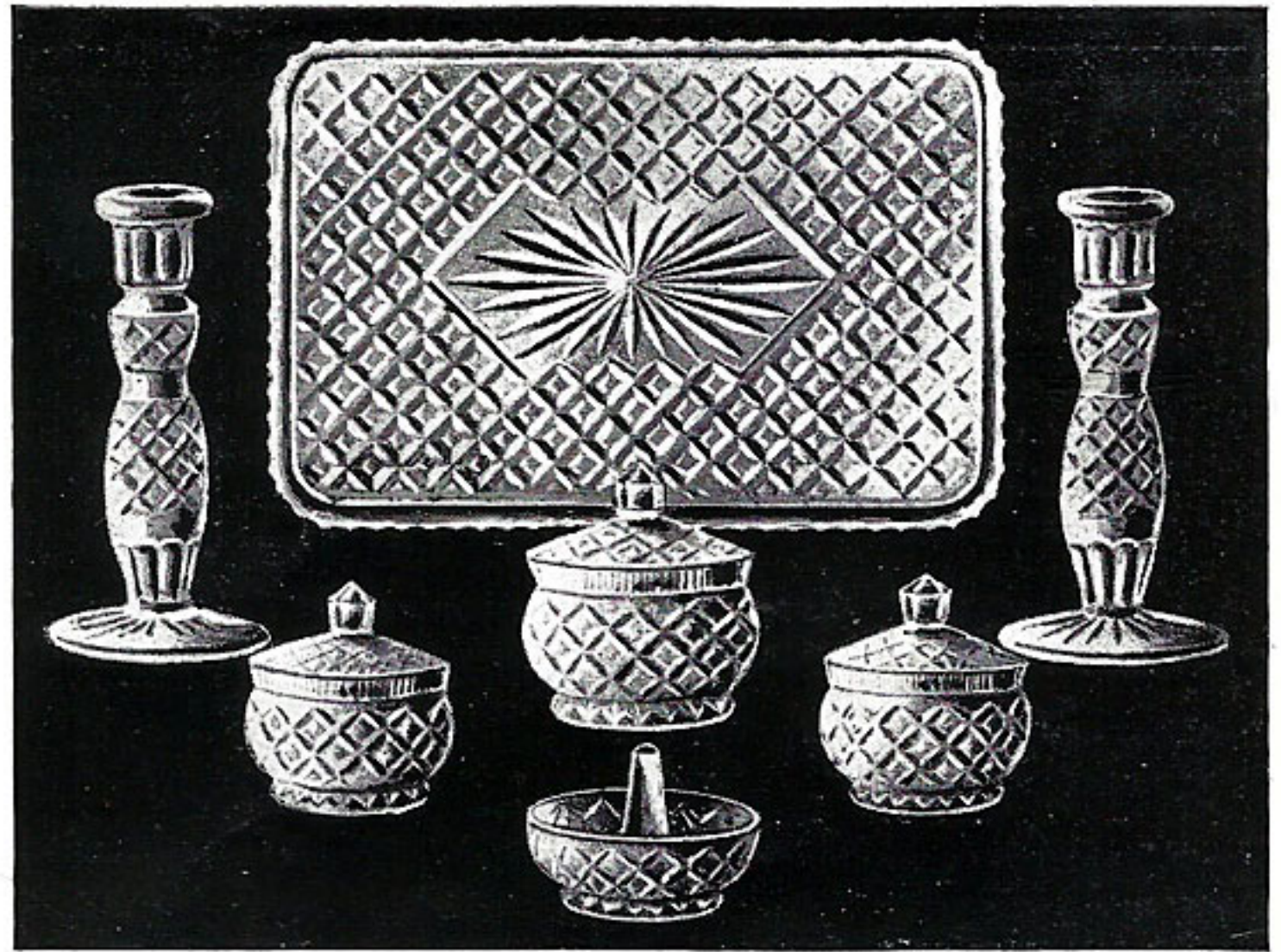


### "MANCHESTER."

7 PIECES.

Tall Candlesticks.

Also made with low Candlesticks.



### "2522/ DIAMOND."

7 PIECES.

Made in Flint,  
Amber, Blue and  
Green



### "REGAL."

5 PIECES.

Also "COUNTESS" (7 Pieces).







## TRINKET SETS



"TYNESIDE."  
7 PIECES.



"MAID."  
7 PIECES.  
Made in Flint, Blue, Green  
and Amber



"CADET."  
7 PIECES.  
Also "JUNIOR" with  
alternative Brush Tray.







## FRUIT SETS



### "COUNTY" FRUIT SET.

Frosted. Made in Flint.

One 8½" Salad and six 4½" Dishes, Round.

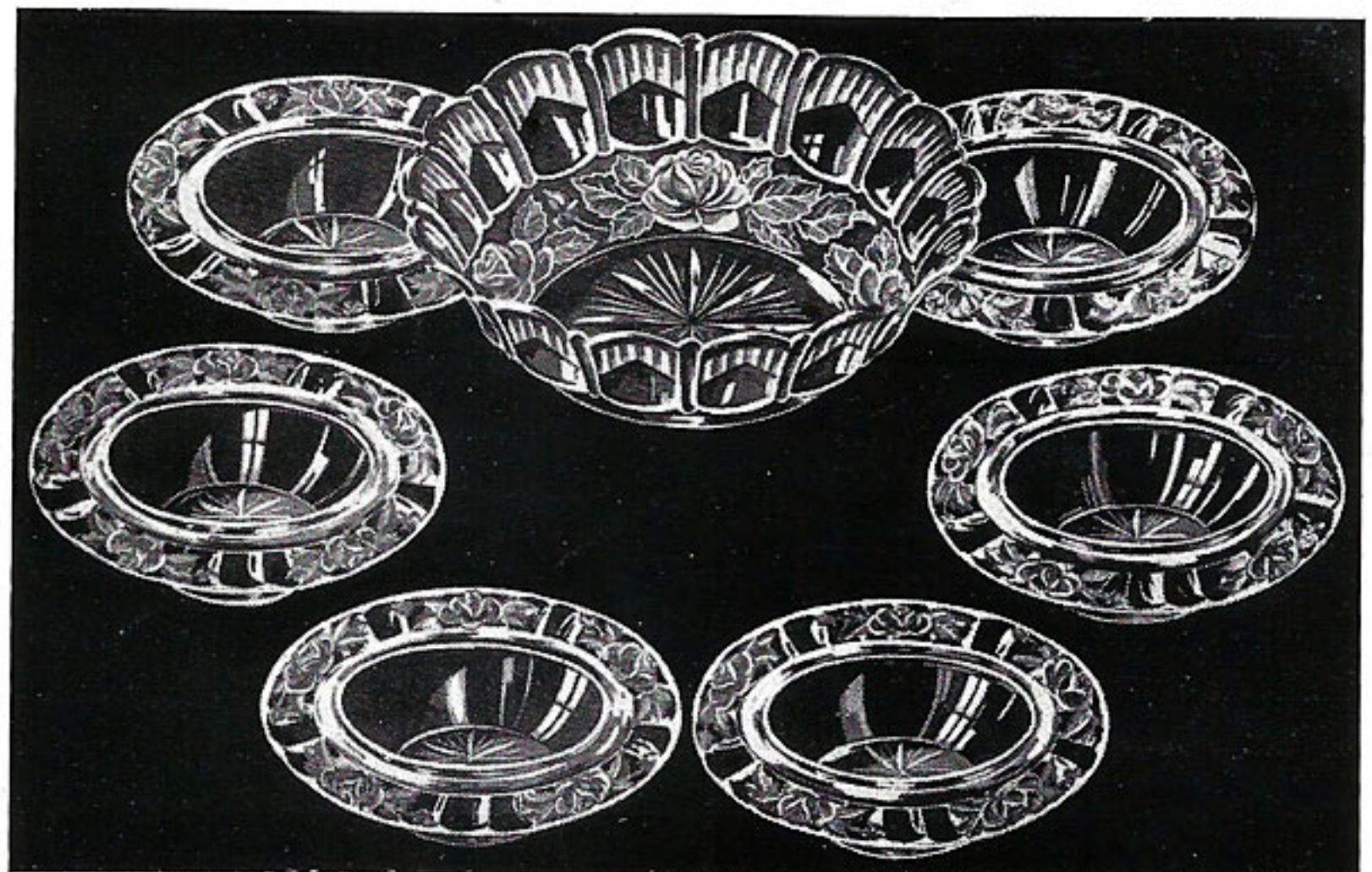
Also made with Star Base in Flint, Amber,  
Blue, Green and Rosalin.



### "FLORA" FRUIT SET.

One 10" Salad and  
six 6¾" Dishes, Round.

Made in Flint, Amber, Blue,  
Green, and Rosalin.  
Acid finish.



### "BERKLEY" FRUIT SET.

Incurved and Straight.

One 7½" Server and six 4½" Dishes.







## 2499 SUITE



9" SALAD.



SUGAR. 6" dia.



CREAM. 4" high.



VASE, HOLDER & PLINTH.  
Vase 6" high.



SALAD AND STAND.  
10½" high.



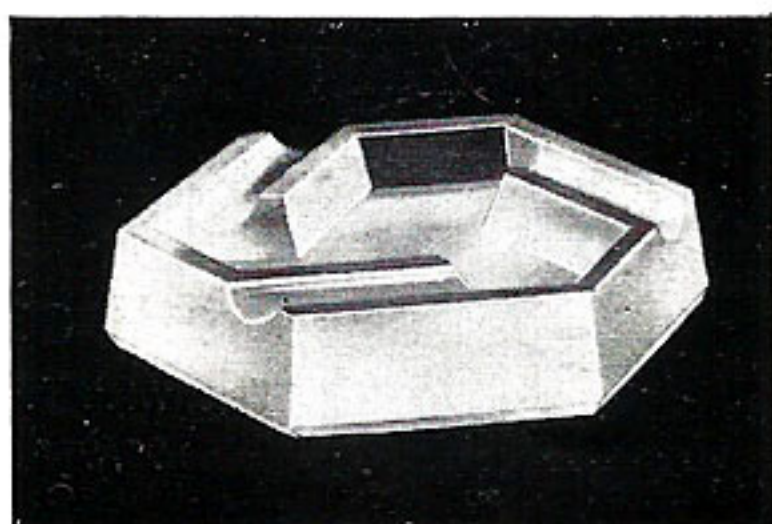
SOWERBY'S ELLISON GLASSWORKS LTD.







## ASHTRAYS, BUTTERS. Etc.



2539 ASH TRAY.

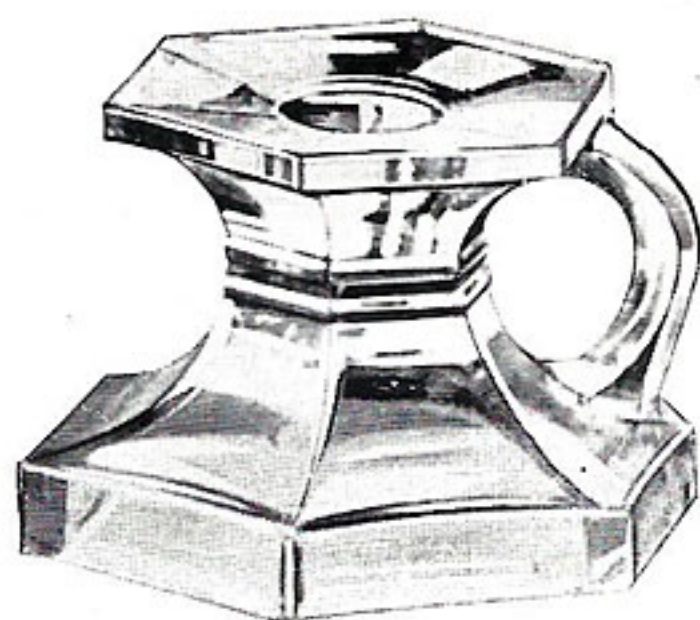
3½" dia.

Made in Flint, Amber,  
Blue, Green and Rosalin.



"SURREY" BUTTER.

6½" dia.



"GOODNIGHT" CANDLESTICK.

2½" high.



"BIRD" SWEET.

4" dia.

Made in Flint, Amber, Blue,  
Green and Rosalin.



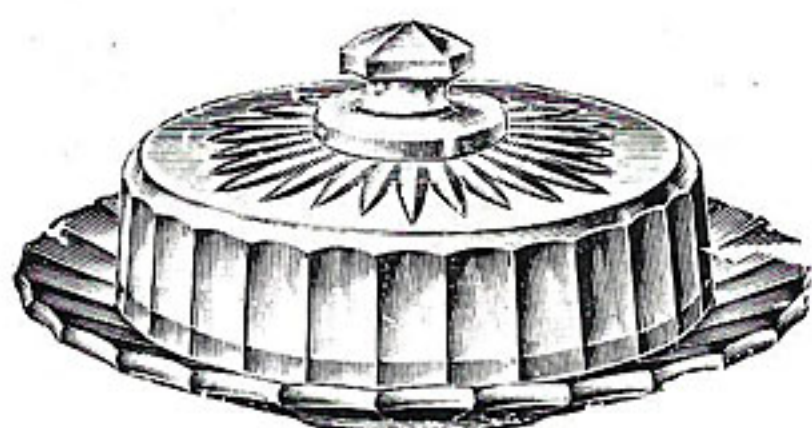
"ESSEX" BUTTER (Deep). 6½" dia.



2522 CANDLESTICK.

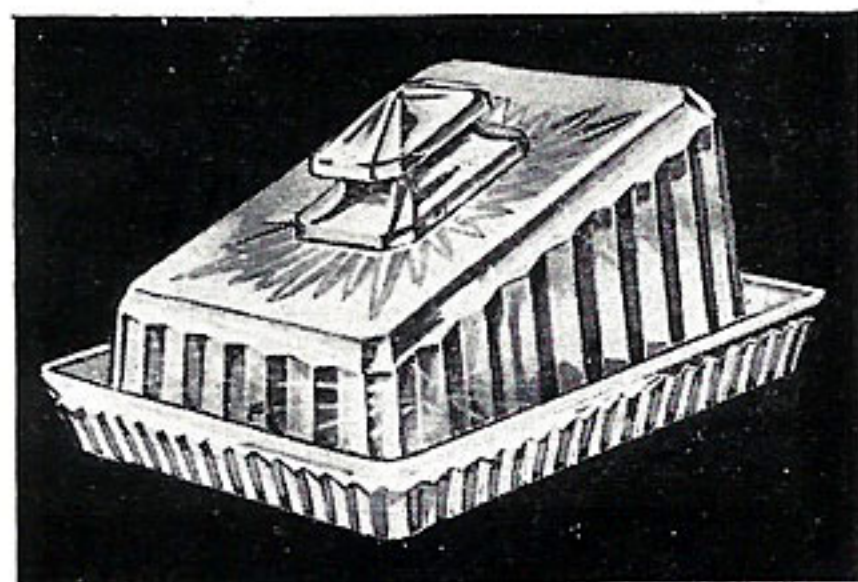
2½" high.

Made in Flint, Amber, Blue,  
Green and Rosalin.  
Also in Satinette finish.



"DIPLOMA" CHEESE DISH.

7" dia.



"NORWICH" CHEESE DISH (Small).

6½" x 5¼".



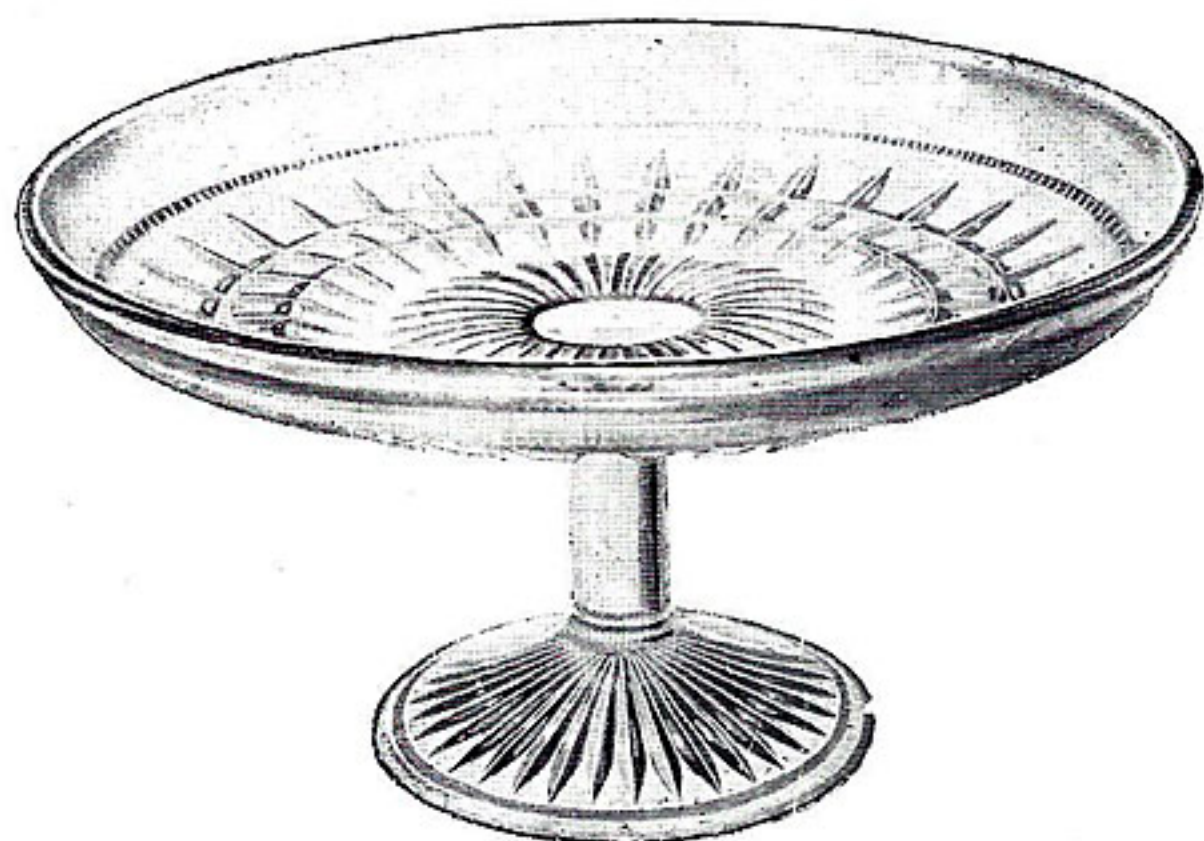
SOWERBY'S ELLISON GLASSWORKS LTD.







## COMPORTS



2381 COMPORT.  
Flat, with Turned-up Edge.  
9", 9½" and 10½".



2232 COMPORT.  
Flat, with Turned-up Edge.  
9", 10" and 11½".



"SURREY" COMPORT.  
Flat, with Turned-up Edge. 8½" and 9½".

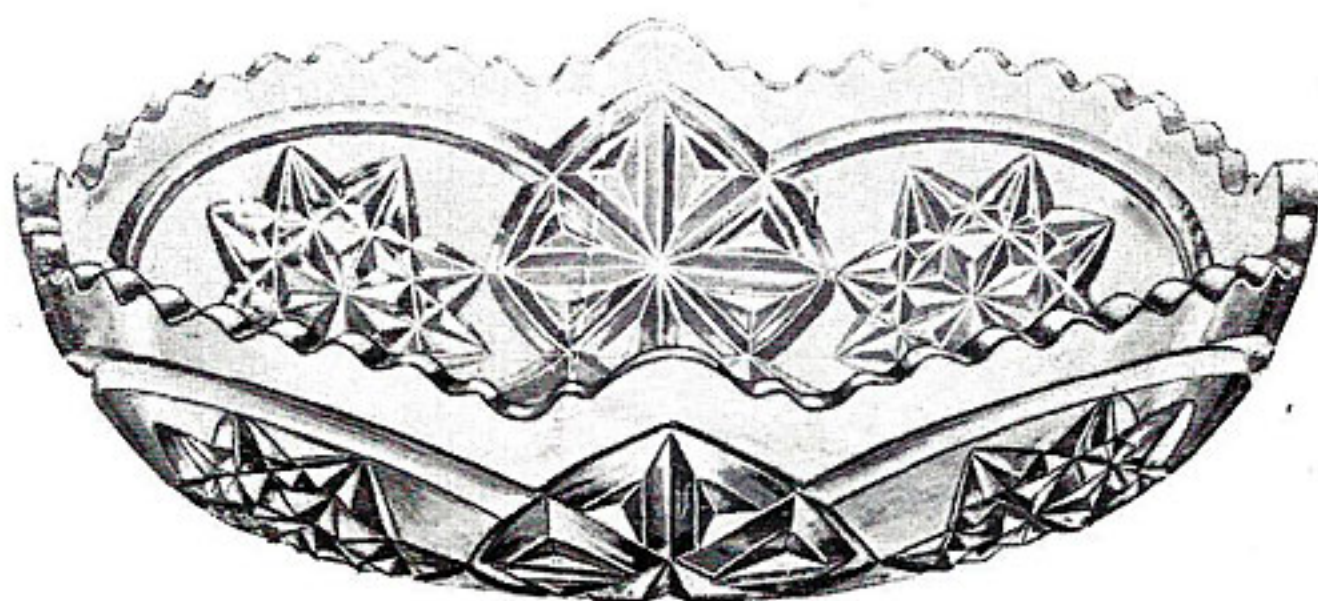




## DISHES

## "DERBY" DISH.

Oval,  $6\frac{1}{2}$ ",  $7\frac{1}{2}$ ",  $8\frac{1}{2}$ ",  $9\frac{1}{2}$ " and  $10\frac{1}{4}$ ".  
 Round,  $6\frac{1}{2}$ ",  $7\frac{1}{2}$ ",  $8\frac{1}{2}$ " and  $9\frac{1}{2}$ ".



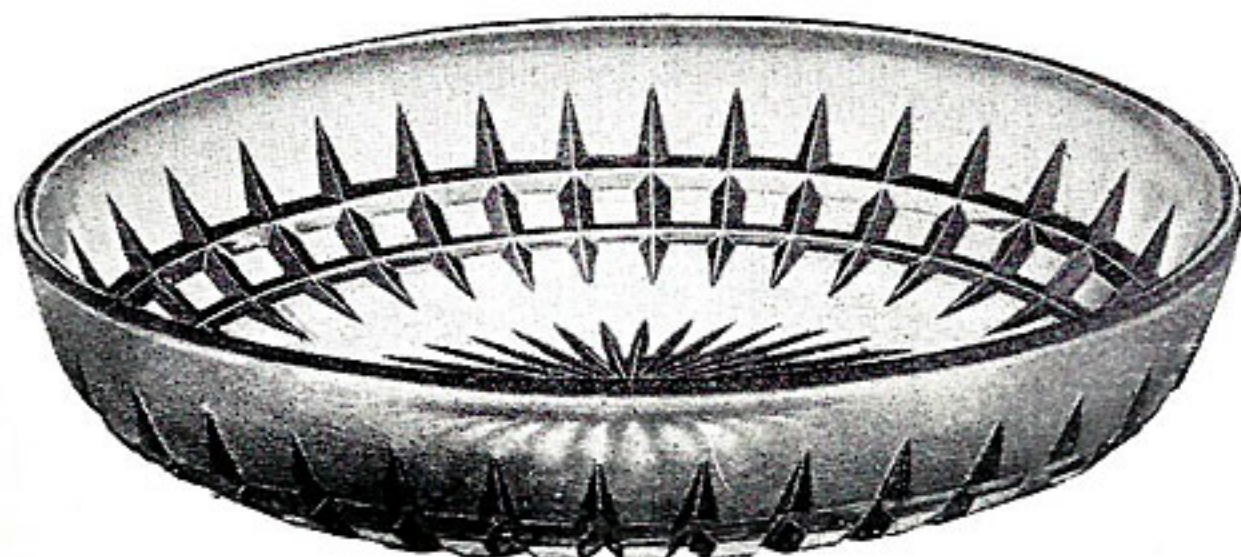
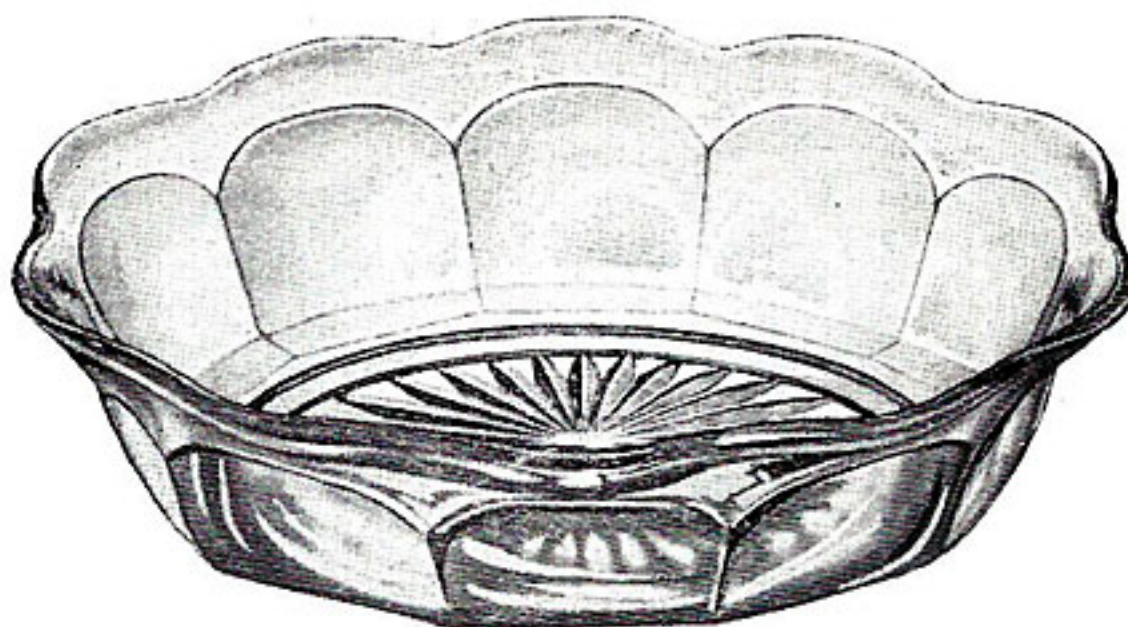
## 2409 DISH.

Oval,  $5\frac{1}{2}$ ",  $6\frac{1}{2}$ ",  $7\frac{1}{2}$ ",  $8\frac{1}{2}$ ",  $9\frac{1}{2}$ " and  $10\frac{1}{4}$ ".  
 Round,  $4\frac{1}{2}$ ",  $5\frac{1}{2}$ ",  $6\frac{1}{2}$ ",  $7\frac{1}{2}$ ",  $8\frac{1}{2}$ ",  $9\frac{1}{2}$ " and  $10\frac{1}{4}$ ".



## "ESSEX" DISH.

Oval,  $5\frac{1}{2}$ ",  $6\frac{1}{2}$ ",  $7\frac{1}{2}$ ",  $8\frac{1}{2}$ ",  $9\frac{1}{2}$ " and  $10\frac{1}{4}$ ".  
 Round,  $4\frac{1}{2}$ ",  $5\frac{1}{2}$ ",  $6\frac{1}{2}$ ",  $7\frac{1}{2}$ ",  $8\frac{1}{2}$ ",  $9\frac{1}{2}$ " and  $10\frac{1}{4}$ ".



## 2383 DISH.

Oval,  $8\frac{1}{2}$ ",  $9\frac{1}{2}$ ",  $10\frac{1}{4}$ " and  $11\frac{1}{2}$ ".





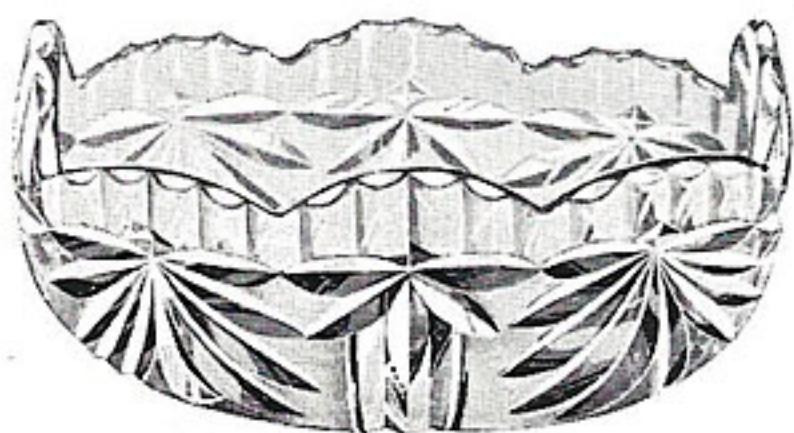
## DISHES, SALAD BOWLS, Etc.



"DEVON" SALAD AND STAND.  
Round and Square. Height 10".



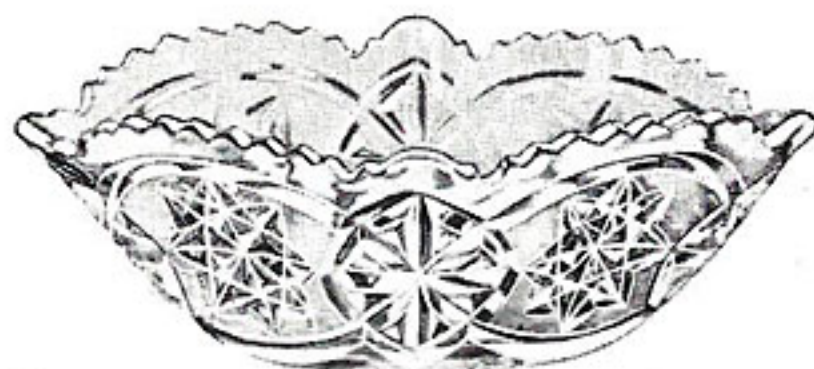
"DERBY"  
BOWL AND STAND.  
Height 10".



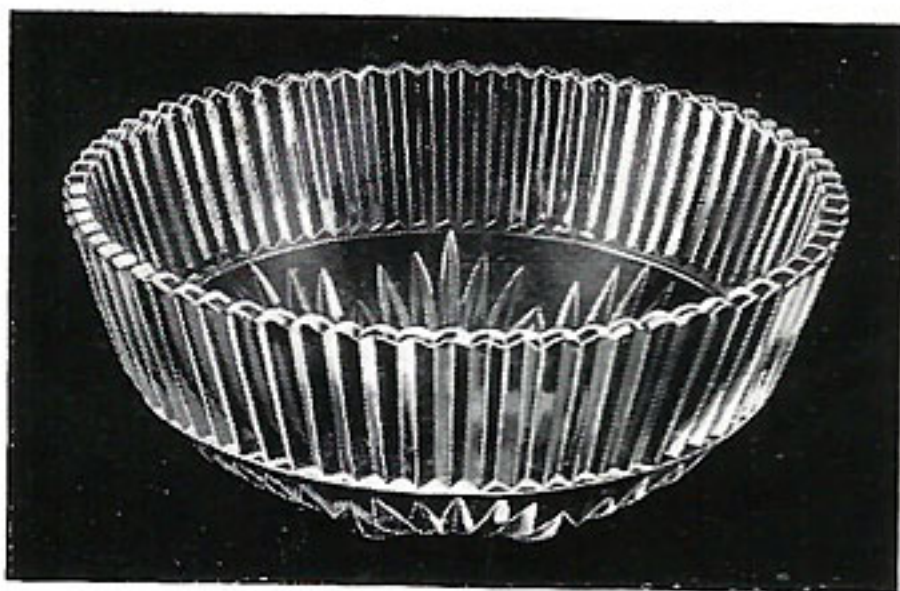
"ARGYLE" SALAD BOAT.  
Oval. Incurved and Flanged.  
Sizes 11" and 12".



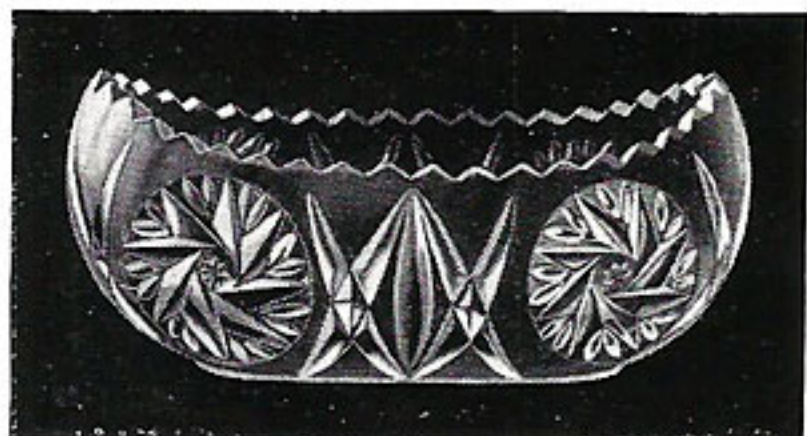
2473 DISH.  
Round. Flanged and Deep.  
Square and Octagonal.  
Sizes 6½", 7½", 8½", and 9½"



"DERBY"  
DIAMOND-SHAPED BOAT.  
Sizes 7", 8", 9", 10" and 11".



2455 DISH.  
Round, Flanged and  
Square.  
Sizes 6½", 7½", 8½" and 9½".  
Made in Flint, Amber,  
Blue and Green.



2480 BOAT.  
Oval. Incurved, 5½". Straight, 6½".  
Made in Flint, Amber, Green and Blue.



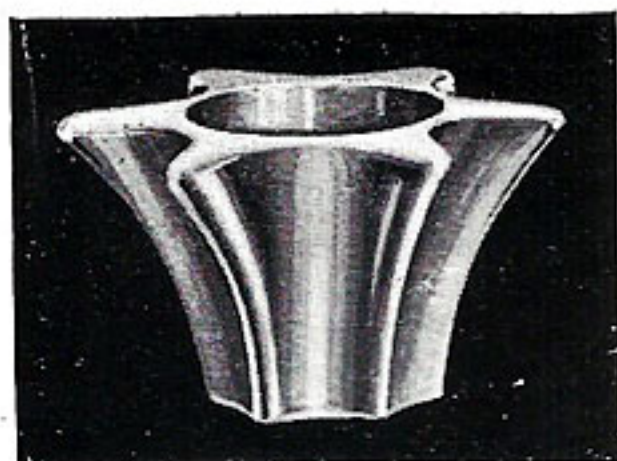
2153 CUCUMBER DISH.  
Size 12½". Made in Flint and Green.  
2153½ Small, size 9½"







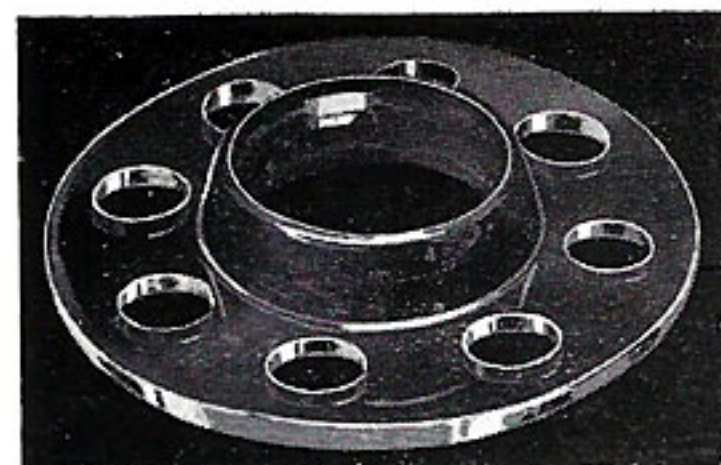
## FLOWER HOLDERS, BLOCKS & PLINTHS



"STAR" HOLDER.  
 Sizes  $2\frac{1}{2}$ ",  $3\frac{1}{2}$ ",  $4\frac{1}{2}$ " and  $5\frac{1}{2}$ ".  
 Made in Flint, Amber, Blue,  
 Green and Rosalin.



2444  
 FLOWER BLOCK.  
 Sizes  $2\frac{1}{2}$ ", 3",  $3\frac{1}{2}$ " and 4".



"DERBY" HOLDER.  
 Sizes 3",  $3\frac{1}{2}$ ", 4",  $4\frac{1}{2}$ " and  $5\frac{1}{2}$ ".



2506 PLINTH.  
 Size  $3\frac{3}{8}$ " (inside top).  
 2435 Size  $4\frac{1}{8}$ " (inside top).



2556 PLINTH. Oval.  
 Size  $6\frac{1}{2}$ " (inside top).



2550 PLINTH.  
 Size  $5\frac{1}{4}$ " (inside top).



2490 PLINTH.  
 Size  $5\frac{1}{4}$ " (inside top).







# MUSTARDS, SALTS, Etc.



2253 MUSTARD.  
2" dia.



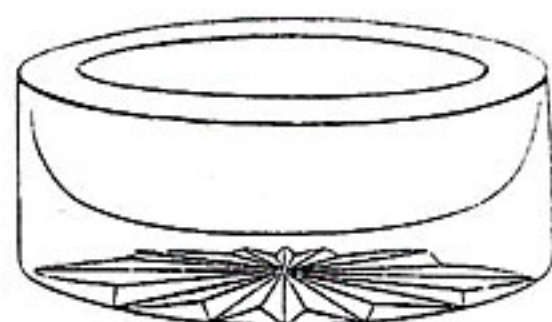
"NORWICH" MUSTARD.  
2½" dia.



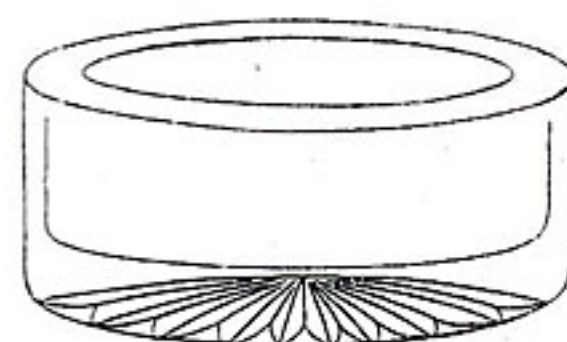
1798 MUSTARD.  
2½" dia.



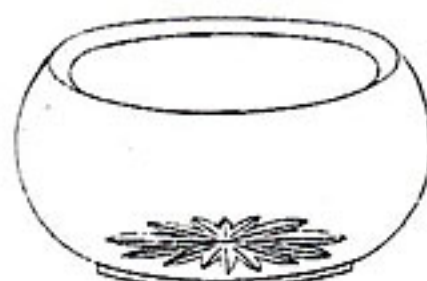
1718 MUSTARD.  
No Cover. 2½" dia.



1040 SALT. Oval. 3" x 4".  
S1040 SALT. „ 2½" x 3½".



2280 SALT.  
Oval. 2½" x 3¾".



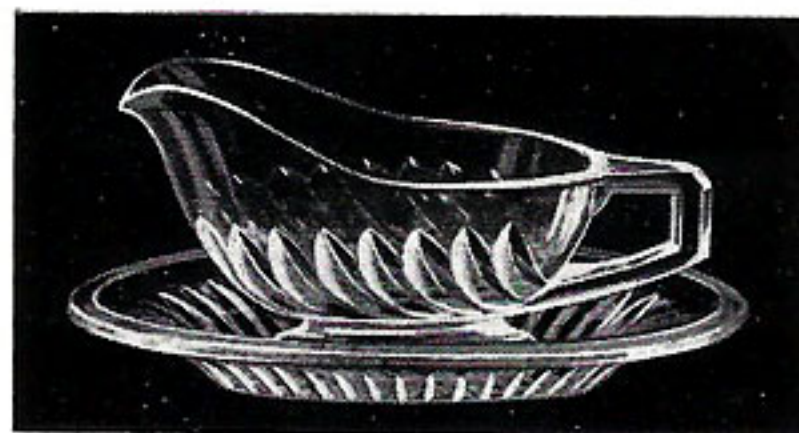
2012 SALT.  
3" dia.



2232 SALT.  
Oval. 3".



2303 SALT.]  
Oval. 3".



"NORWICH" SAUCEBOAT AND PLATE.  
(Detachable.) Plate 6½" x 4½".



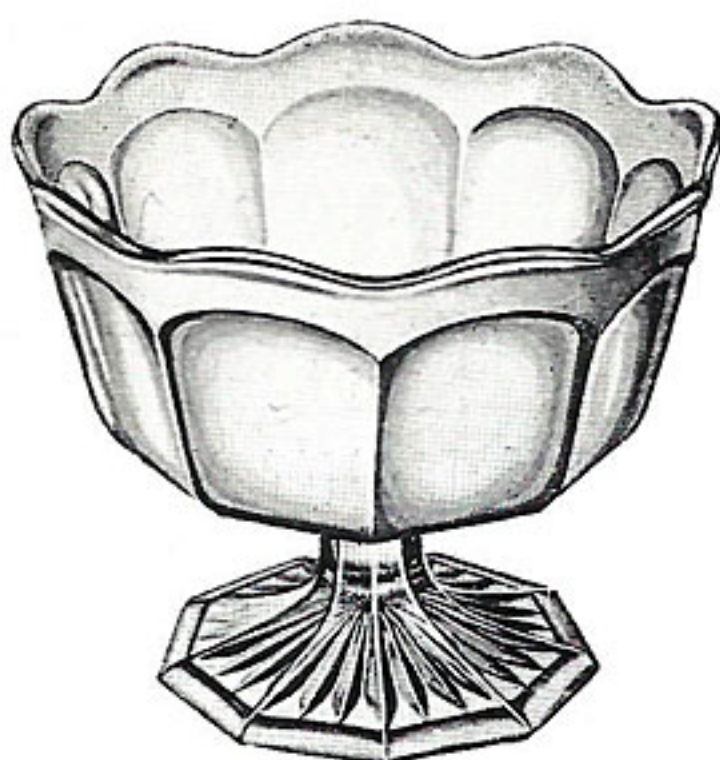




## SUGARS & CREAMS



"ESSEX" SUGAR (Low).  
4½" dia.



"ESSEX" SUGAR (Footed).  
5½" dia.



"ESSEX" CREAM. 3" high.



"SURREY" CREAM (Low).  
3½" high.



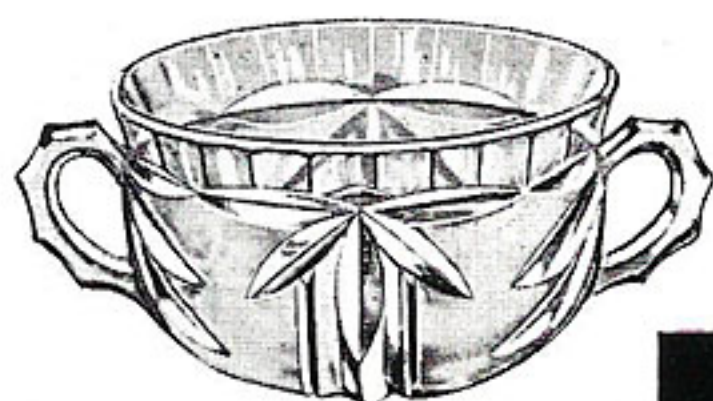
"SURREY" SUGAR (Footed).  
5½" dia.



"SURREY" CREAM (Footed).  
4½" high.



"ARGYLE", CREAM. 3½" high.



"ARGYLE" SUGAR.  
3½" dia.

Flanged and Incurved.  
Also without Foot.



"DERBY" SUGAR  
(Footed).  
5½" dia.



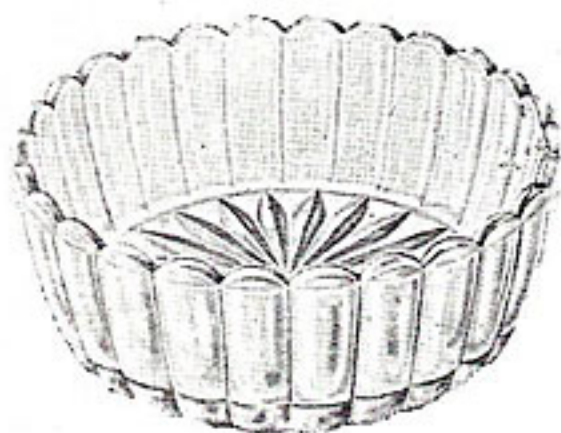
"PEWTER" SUGAR AND CREAM.  
Made in Amber, Blue, Green and Rosalin.



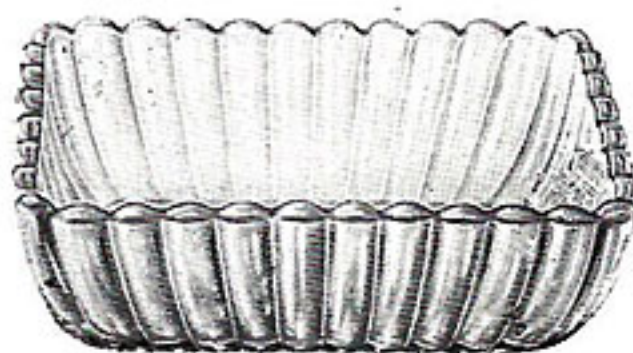




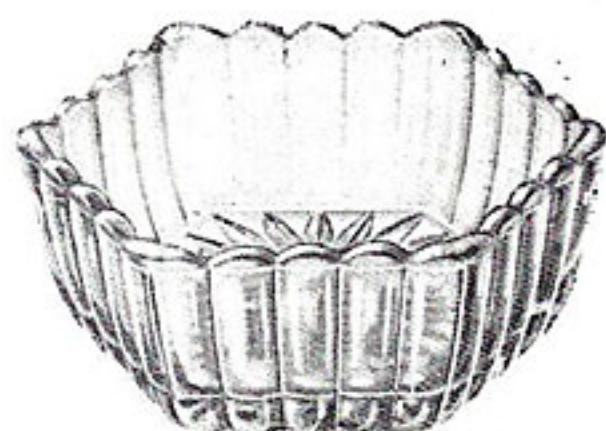
# SWEETS. Etc.



2379 $\frac{1}{3}$  NAPPY.  
Round. 4 $\frac{1}{2}$ " dia.



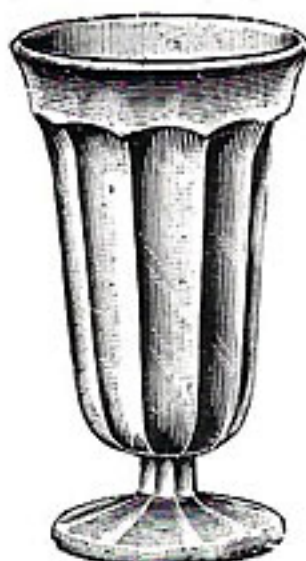
2379 $\frac{1}{2}$  NAPPY.  
Oblong.



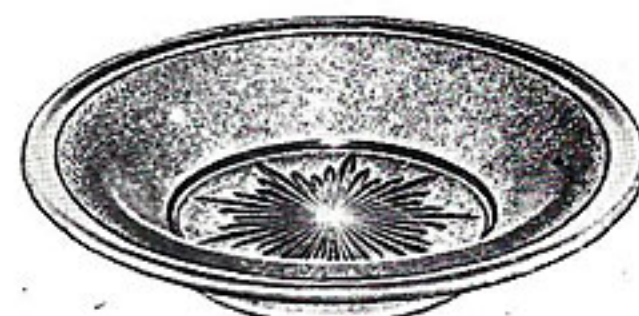
2379 $\frac{1}{4}$  NAPPY.  
Hexagonal.



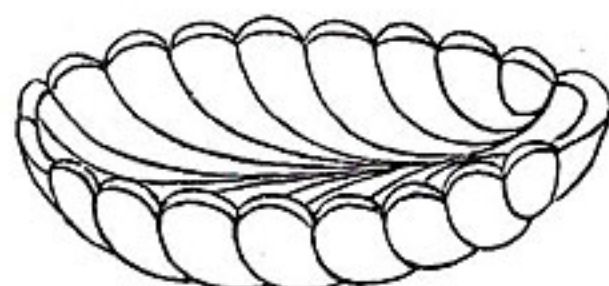
2112 ICE PLATE.  
5 $\frac{1}{2}$ " dia.



"ESSEX" PARFAIT.  
5 $\frac{1}{2}$ " high.



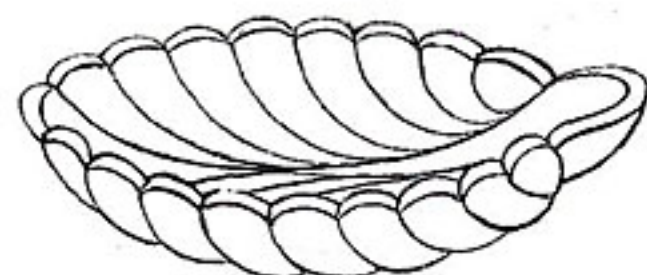
1830 ICE PLATE.  
5" dia.



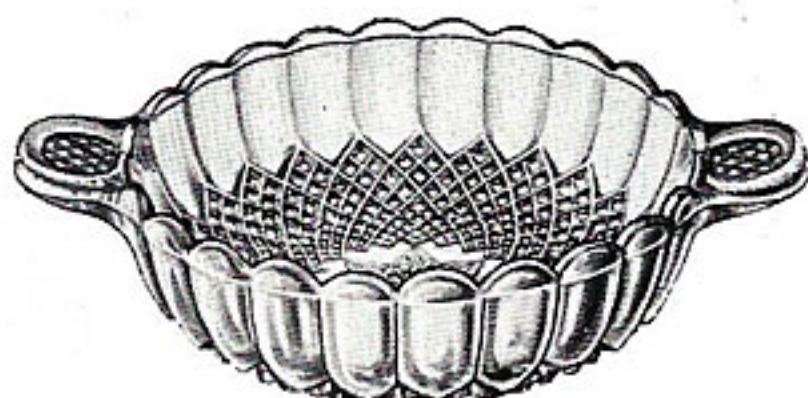
2208 SWEET.  
Round. 4 $\frac{1}{2}$ " dia.



2416 SUNDAE.  
4" dia.  
2484 PLATE.  
5" dia.



2209 SWEET.  
Oval. 4 $\frac{1}{2}$ ".

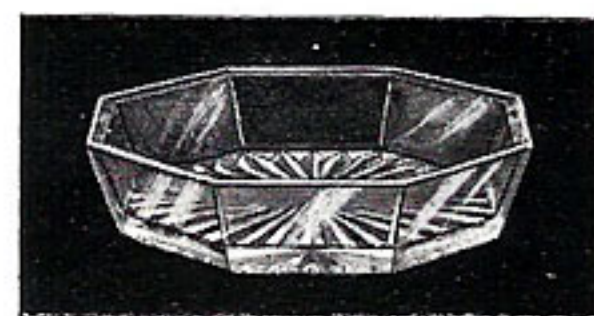


2347 SWEET.  
Round. 4 $\frac{1}{2}$ " dia.

Made in Flint, Amber, Blue, Green  
and Rosalin.



"NORWICH" GRAPE FRUIT.  
4" dia. Saucer attached.

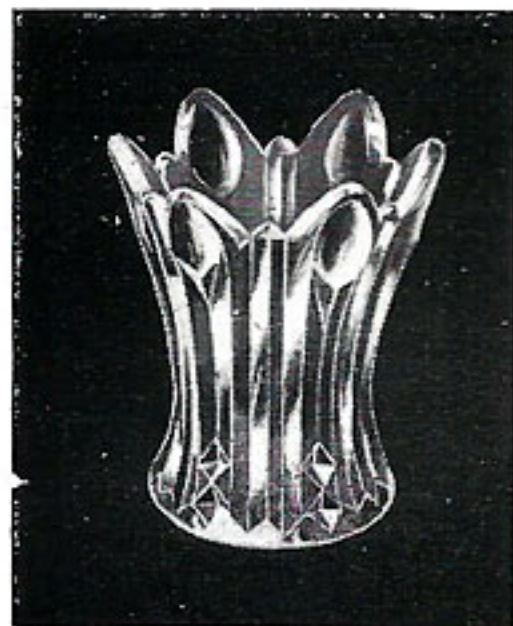


2560 SWEET.  
Octagonal. 4 $\frac{3}{4}$ " dia.





# FLOWER VASES



2505 VIOLET VASE.

2½" high.

Made in Flint, Blue, Green and Amber.



2505 FLOWER TUBE. 8" high.

Made in Flint, Blue, Green, Amber and Rosalin.



2472 VIOLET VASE.

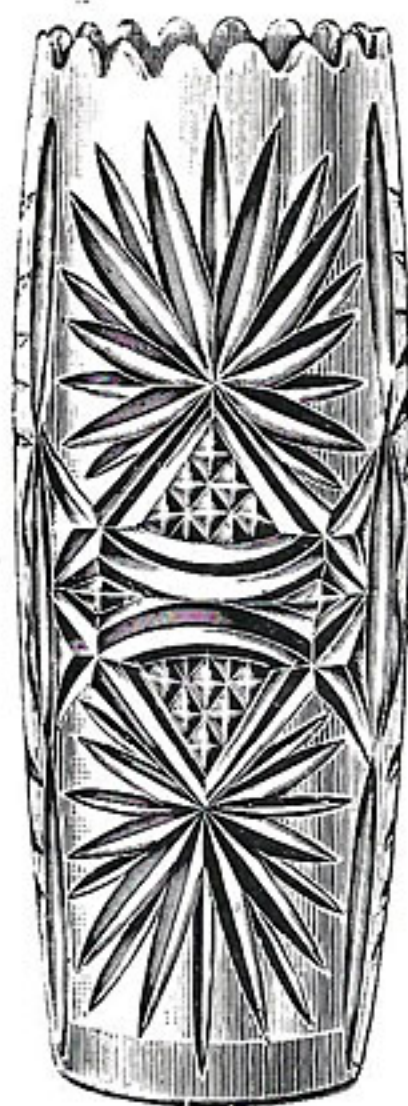
2½" high.

Made in Flint, Blue, Green, Amber and Rosalin.



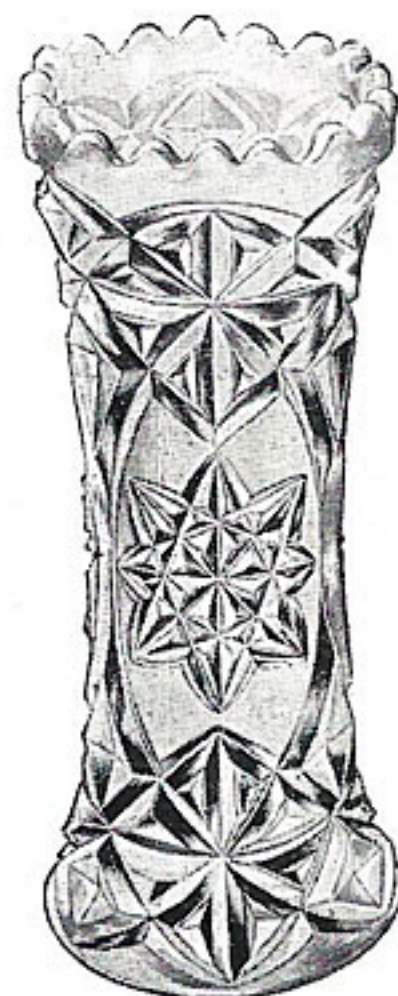
2437½ VASE. 8" high.

Made in Flint, Blue, Green, Amber and Rosalin.



2486 SPILL.

10½" high.



"DERBY" VASE.

Sizes 6", 8" and 10".



"DEVON" SPILL, 10" high.



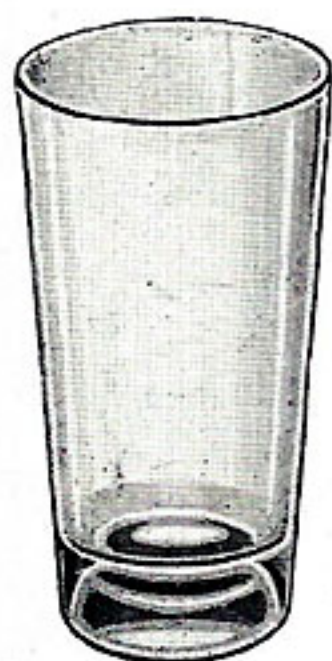
"DEVON" ROSE BOWL AND HOLDER.

6" high.

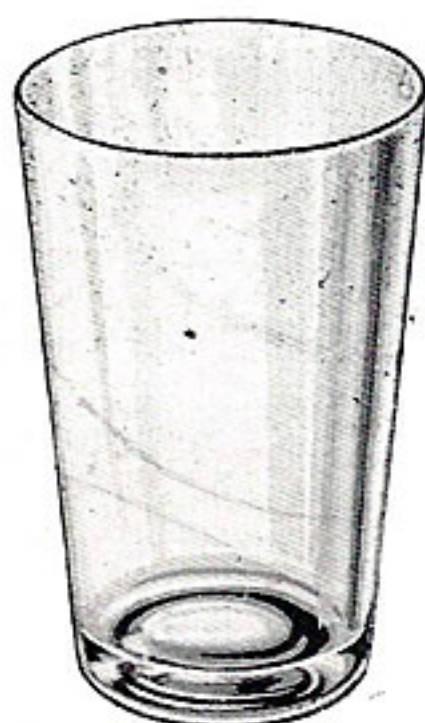




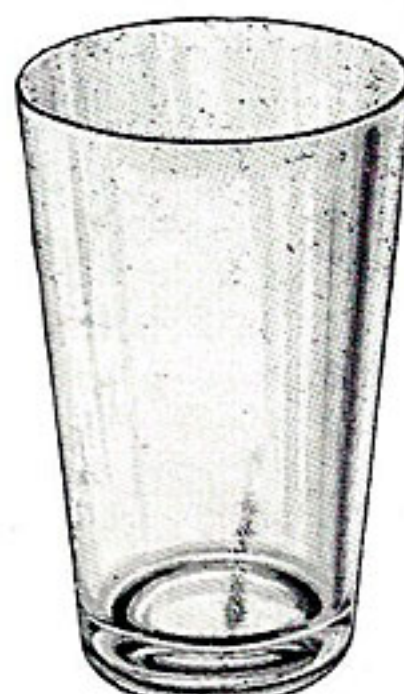
# TUMBLERS



2313  $\frac{1}{3}$ -Pint.



2311 Bare  $\frac{1}{3}$ -Quart.  
12 ozs.



2312 Bare  $\frac{1}{3}$ -Quart.  
11 ozs.



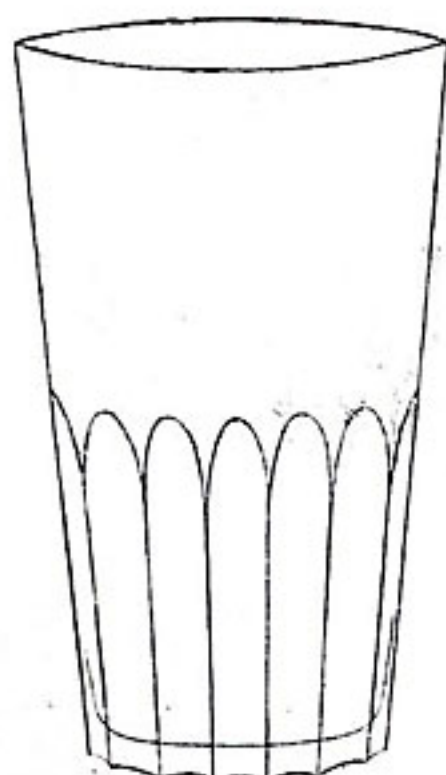
2314  $\frac{1}{3}$ -Quart.



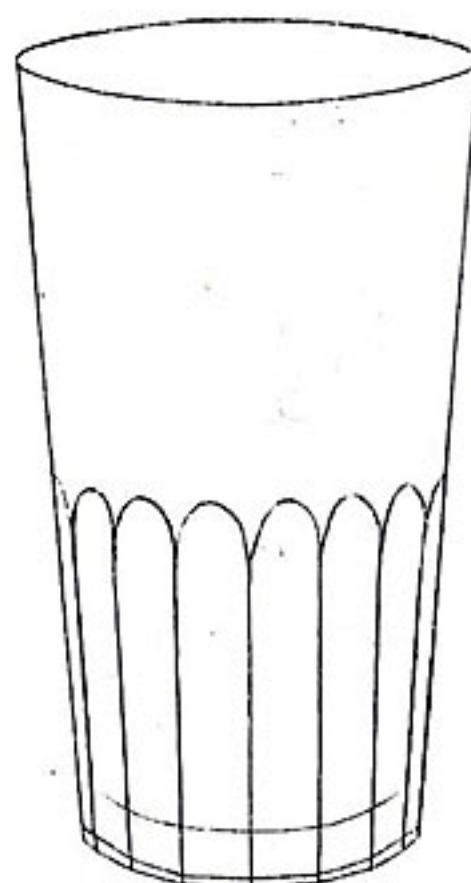
1317 $\frac{1}{2}$   $\frac{1}{3}$ -Quart.



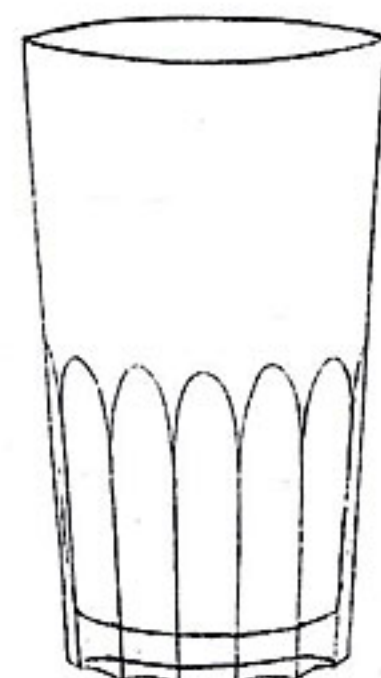
1906  $\frac{1}{2}$ -Pint.



1292 $\frac{1}{3}$   $\frac{1}{3}$ -Quart.



1292 Pint.



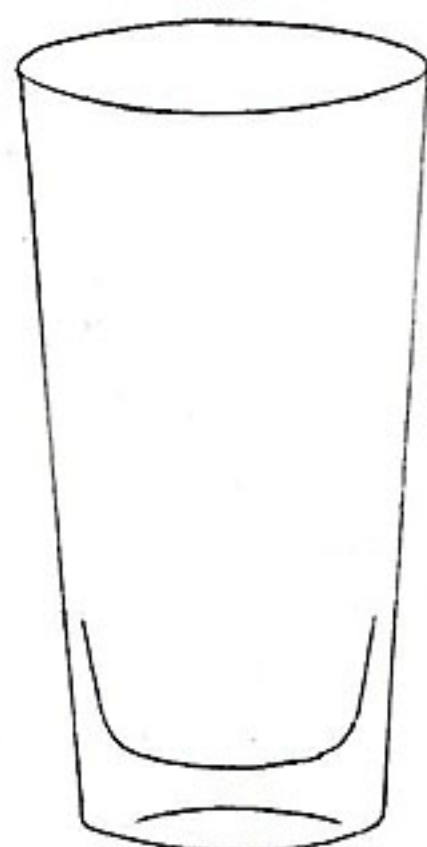
2162  $\frac{1}{2}$ -Pint.  
2162 $\frac{1}{3}$   $\frac{1}{3}$ -Quart.







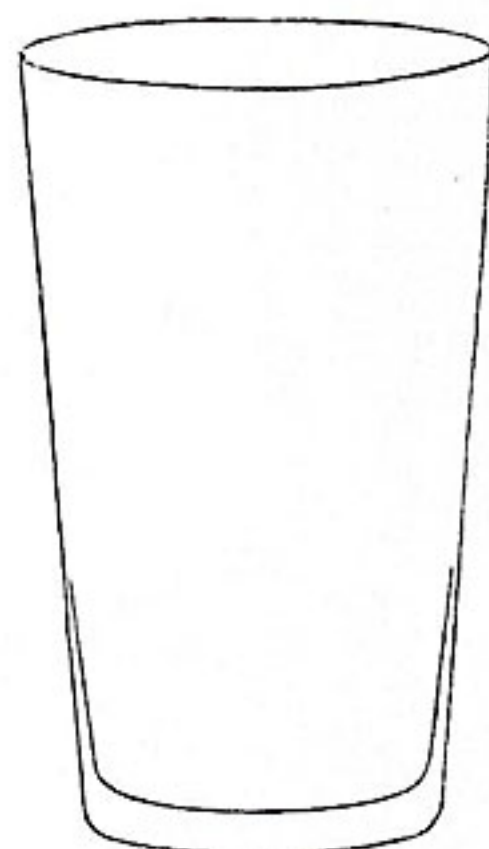
# TUMBLERS & CANS



2145 PINT.



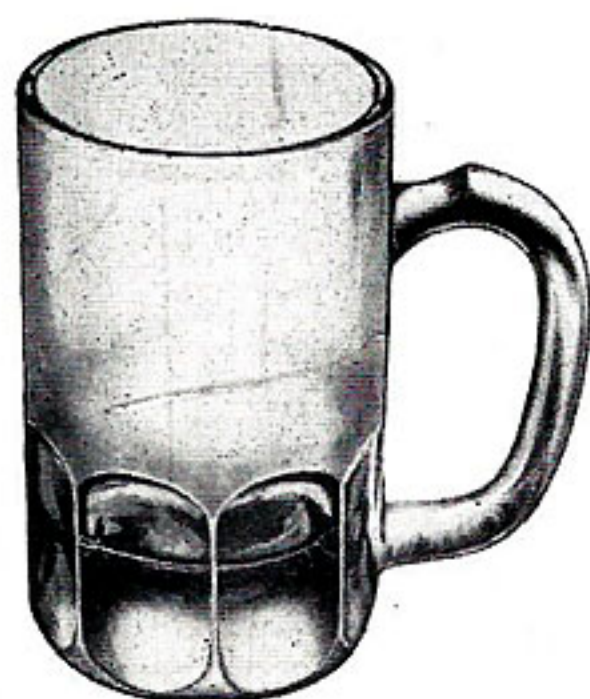
2476 LAGER CAN.  
12 ozs.



1519  $\frac{1}{3}$ -QUART.



2206 CAN.  
Pint and  $\frac{1}{2}$ -Pint.



2384 CAN.  
 $\frac{1}{3}$ -Quart.



2469 CAN.  
Pint and  $\frac{1}{2}$ -Pint.



1513 CAN.  
Pint.  
2336 CAN.  
 $\frac{1}{2}$ -Pint.







## *Index, Terms, Etc.*

	Page.
" Butterfly " Trinket Set ... ..	1
" Flora " Bowl and Figure and Vase ... ..	2
" Ladye " Powder Bowl ... ..	3
" Iris," " Lily," and 2505 Vases and Centre Pieces ... ..	4
" Crocus " and " Tulip " Vases and 2562 Suite ... ..	5
" Hermes " Bowl, 2561 Bowls, Etc. ... ..	6
" Frog " Vase, Bowl and Rose Bowl, Block and Plinth, Etc. ...	7
" Squirrel Bowl and Figure, " Dora " and " Sunray " Vases, Etc.	8
" Berkley " Suite ... ..	9 and 10
" Swan " and " Chic " Butters, Etc. ... ..	11
" Manchester " Suite ... ..	12, 13 & 14
" Oxford " Suite ... ..	15 & 16
" Durham " Suite ... ..	17 & 18
" Worcester " Suite ... ..	19 & 20
Trinket Sets ... ..	21, 22 & 23
Fruit Sets ... ..	24
2499 Suite ... ..	25
Ash Trays, Butters, Etc. ... ..	26
Comports ... ..	27
Dishes ... ..	28 & 29
Flower Holders, Blocks and Plinths ... ..	30
Mustards, Salts, Etc.... ... ..	31
Sugars and Creams ... ..	32
Sweets ... ..	33
Vases ... ..	34
Tumblers and Cans... ..	35 & 36







### *Prices of Packages.*

HOGSHEADS	...	...	...	...	20s.	0d.	Each.
TIERCES.	40 dozen Tumblers and						
	upwards	...	...	...	15s.	0d.	„
Do.	30 dozen Tumblers	...	...	...	8s.	0d.	„
CASKS.	25 dozen Tumblers	...	...	...	5s.	6d.	„
Do.	Smaller	...	...	...	3s.	0d.	„

### *Returned Empty Packages.*

Packages are credited at the full amount charged when received by us carriage paid, in good condition, and complete with heads.

The heads should be securely fastened in, and the address cards on the packages reversed.

Senders should also take receipt from the carriers, and advise us of the registered number shown on all our packages at the time of forwarding.

No empty packages will be received except OUR OWN, which bear our mark.

NO CULLET IS RECEIVED.





